

“A Study To Assess The Level Of Knowledge And Attitude Related To Tooth Avulsion Management Among School Teachers Working In Selected Schools At Mangalore.”

Ms.Anu Sebastian, Ms.Aparna k, Ms. Gayathri v¹, Mrs.Navvya ^{2*}

4th year BSC Nursing students, Yenepoya Nursing College, Yenepoya (Deemed to be) University, Mangaluru, Karnataka, E-mail:- anusebakukku2000@gmail.com, 123gayathriammu@gmail.com

*Corresponding Author: - Mrs.Navvya

*Assistant professor, Department of community health nursing, Yenepoya Nursing College, Yenepoya (Deemed to be) University, Mangaluru, Karnataka, India 575018, E-mail:- navyabh356@gmail.com, Phone No: - 9632870965
DOI:10.47750/pnr.2022.13.S08.616

Abstract

Smile reveals an individual's self-confidence. It is also a means of socialization where teeth play a vital role in a pleasant smile and also contributes to each individual's well-being and quality by positivity affecting physical and mental well-being, appearance and interpersonal relationship. Children, especially school children, face particular health challenges including all health problems related to the stages of their physical and mental development, which makes them especially vulnerable to traumatic dental injuries including the tooth avulsion.

Aim of the study: The study aims to assess the level of knowledge and attitude related to tooth avulsion management among school teachers in selected schools at Mangalore.

Material and Method: Descriptive research design and quantitative research approach was used for the study among 70 school teachers selected by simple random sampling technique. The data was collected by using a questionnaire assessing the knowledge and attitude related to tooth avulsion management and demographic performance.

Result: The result shows that majority 49(70.0%) of them had excellent knowledge, 15(21.4%) of them had good knowledge, 4(5.7%) had average knowledge, 2(2.9%) of them had poor knowledge regarding tooth avulsion. Majority 66(94.3%) were shown positive attitude and only 4(5.7%) of them have shown neutral attitude towards tooth avulsion. There was a significant association between level of knowledge and selected demographic variables like age, qualification, experience and source of information. There was no significant association between level of attitude and selected demographic variables.

Interpretation and conclusion: The study proved that majority of school teachers have excellent knowledge and had positive attitude towards tooth avulsion.

Key words:- knowledge, tooth avulsion, attitude.

1. INTRODUCTION

One of the most common injuries during the growing age of an individual is dento-alveolar injuries. The oral region comprises 1% of total body area, the oral injuries account for as much as 5% of all body injuries, with an even higher proportion of oral injuries among children¹. During the school years, children spend most of their time with their teachers. Similarly, the knowledge and skills needed to attain their future goals and nurture hidden potentials are acquired during this period².

2. MATERIALS AND METHODS

This study aims to assess the level of knowledge and attitude related to tooth avulsion management among school teachers working in selected schools at Mangalore. Descriptive research design and quantitative research approach was used for the study among 70 school teachers selected by simple random sampling technique. The data was collected by using a questionnaire assessing the knowledge and attitude related to tooth avulsion management and demographic performance.

3. FINDINGS

The data was tabulated, analyzed and interpreted using descriptive and inferential statistical method. Analyzed data are presented in following sections.

Table 1: frequency and percentage distribution of sample characteristics

Table2: Description of subject according to the level of knowledge

Table3: Description of subject according to the level of attitude of school teachers

Table 4: Association between level of knowledge and selected demographic variables

Table 5: Association between level of attitude and selected demographic variables

Table 6: Correlation between knowledge and attitude of school teachers regarding tooth avulsion management

Table 1: Frequency and percentage distribution of sample characteristics

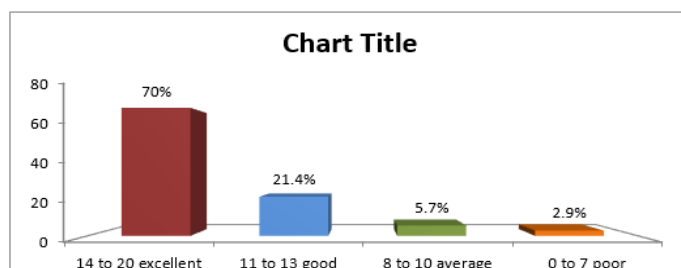
SI NO.	Demographic variables	Frequency(f)	Percentage (%)
1.	Age in years		
	a) <30	17	24.3
	b) 31-35	16	22.9
	c) 36-40	14	20.0
2.	Gender		
	a) Male	10	14.3
	b) Female	60	85.7
	Qualification		
3.	a) PU with Bed	43	61.4
	b) Master degree	25	35.7
	c) Any other	2	2.9
4.	Experience		
	a) <5	22	31.4
	b) 5-10	33	47.1
	c) 10-15	5	7.1
5.	d) >15	10	14.3
	School type		
	a) Government	70	100.00
	b) Private	0	0
6.	Previous knowledge		
	a) Yes	69	98.6
7.	b) No	1	1.4
	Source of information		
	a) Classes	55	78.6
	b) Books	14	20.0
	c) Newspaper	1	1.4

Table 1: shows that majority school teachers 23(32.9%) belongs to the age >40. Majority of them 60(85.7%) belongs to females. Most of them 43(61.4%) having degree with BEd. Majority of school teachers 33(47.1%) having 5-10 years of experience. 70 (100.0%) school teacher are in government. 69(98.6%) school teachers having previous knowledge about tooth avulsion management. 55(78.6%) school teachers having information through the classes about tooth avulsion management.

Table 2: Description of subject according to the level of knowledge

Level of knowledge	Knowledge score	Frequency	Percentage (%)
Excellent	14-20	49	70.0
Good	11-13	15	21.4
Average	8-10	4	5.7
Poor	0-7	2	2.9

Table 2: The data depicted in table 2 shows that 70% school teachers have excellent knowledge,21.4% have good knowledge,5.7% have average knowledge and 2.9% have poor knowledge

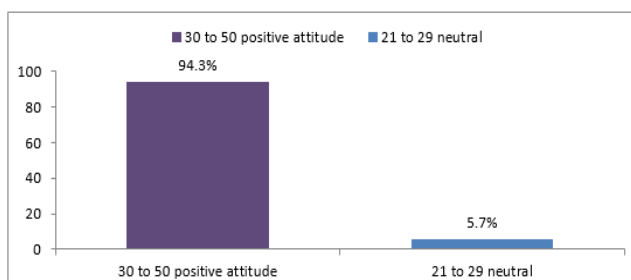


Bar diagram showing the description of knowledge level of school teachers on knowledge questionnaire

Table 3: Description of subject according to the level of attitude of school teachers

Level of attitude	Score	Frequency	Percentage (%)
Positive attitude	30-50	66	94.3
Negative attitude	21-29	4	5.7

Table3:The Data depicted in the table 3 shows that 94.3% of school teachers having positive attitude and 5.7% having negative attitude



Bar diagram showing the attitude level of school teachers on attitude scale questionnaire

Table 4: Association between level of knowledge and selected demographic variables

Sl.No	Demographic value	Chi-square value
1.	Age a) <30 b) 31-35 c) 36-40 d) >40	0.005
2	Gender a) Male b) Female	0.947
3	Qualification a) degree with B.Ed b) Master degree c) D. Ed	0.001
4	Experience a) <5 b) 5-10 c) 11-15 d) >15	0.001
5	Type of school a) Government b) Private	70
6	Do have any previous knowledge regarding tooth avulsion management a) Yes b) No	0.569
7	Source of information regarding tooth avulsion obtained from a) Classes b) Books c) News paper	0.001

Table value =0.05

Table4: The result shows that there was no significant association between knowledge score and demographic variables such as gender ($X^2=0.947$) previous knowledge ($X^2=0.569$), in school there is no statistics are computed because school is constant. There was a significant association between demographic variables like age ($X^2=0.005$), qualification ($X^2=0.001$), experience ($X^2=0.001$), source of information ($X^2=0.001$).

Table 5:- Association between level of attitude and selected demographic variables

SL no.	Demographic value	Chi-square value
1.	Age a) <30 b) 31-35 c) 36-40 d) >40	0.842
2.	Gender d) Male e) Female	0.531
3.	Qualification a) Degree with BEd b) Master degree c) D ed	0.210
4.	Experience c) <5	

	d) 5-10 e) 11-15 f) >15	0.929
5.	Type of school a) Government b) Private	70
6.	Do you have any previous knowledge regarding tooth avulsion management a) Yes b) No	0.806
7.	Source of information regarding tooth avulsion obtained from a) Classes b) Books c) Newspaper	0.302

Table 5: The table shows that there was no significant association between attitude scale and demographic variables such as age ($X^2=0.842$), gender ($X^2=0.531$), qualification ($X^2=0.210$), experience ($X^2=0.929$), previous knowledge ($X^2=0.0.806$), source of information ($X^2=0.302$), in school there is no statistics are computed because schools constant.

Table 6: Correlation between knowledge and attitude of school teachers regarding tooth avulsion management.

Variable	r value	P value	Remarks
Knowledge and attitude	0.56	0.647	Moderate positive correlation

Table 6: The table shows moderate positive correlation between knowledge and attitude scores of school teachers regarding tooth avulsion management.

4. CONCLUSION

The findings revealed that there was a significant association between demographic variable like genders. There was no significant association between knowledge score and demographic variables such as age, qualification, experience, previous knowledge and source of information in school there is no statistics are computed because schools is constant. The present study revealed that there was a significant association between level of attitude and selected demographic variables like experience and there was no significant association between level of attitude and other demographic variables

5. ETHICAL CLEARANCE

Yenepoya Ethics Committee-2(YEC) approved my study protocol number YEC2/823 titled “**A study to assess the level of knowledge and attitude related to tooth avulsion management among school teachers working in selected schools at Manglore.**” on 16/11/2021 under the chairperson of Dr. Vijaya Hegde.

6. Source of Funding: Self

7. Conflict of Interest: Nil

8. REFERENCE

1. Andersson L. Trauma in a global health perspective. Dental Traumatology: official publication of international Association for Dental Traumatology 2008 Jun 1;24(3):267-
2. Pancheco LF, Fiho PF, Letra A, Menezes R, Villoria GE, Ferreira SM. Evaluation of the knowledge of the treatment of avulsions in elementary school teachers in Rio de Janeiro, Brazil. Dental Traumatology 2003 Apr;19(2):76-8