

Classification Of Oral Squamous Cell Carcinoma Using Convolutional Neural Networks And Binary Particle Swarm Optimization On Oral Histopathological Images

¹Dr.D.Ravikumar , ²Dr. B. Kavitha , ³Mekala R , ⁴D.Sasikala , ⁵P. Dineshkumar , ⁶Dr.Vijayalakshmi. P , ⁷Dr. M. Monisha

¹Professor, Department of Electronics and Communication Engineering, Kings Engineering College, Chennai, Tamilnadu, India. Pincode: 602117

E- Mail id: ravikumar.dinakaran@gmail.com

²Asst. Prof, Department of Botany, Rayalaseema University, kurnool, AP.E-mail: kavithab15@gmail.com

³Assistant Professor, Department of Information Science and Engineering,Bannari amman Institute of Technology, Sathyamangalam, Erode district-638401, Tamilnadu. Email: mekalars@gmail.com

⁴Professor, Bannari Amman Institute of Technology, Sathyamangalam, Tamil Nadu 638401 E-mail: sasiramesh04@gmail.com

⁵Assistant professor, Department of Information Technology, kongunadu College of Engineering and Technology, Namakkal-Trichy Main Road, Tholurpatti Post,Thottiam Taluk, Trichy Dt, Tamil Nadu. India - 621215. Email: pdineshcs@gmail.com

⁶Associate Professor, Department of Electronics and Communication Engineering,Vels Institute of Science Technology and Advanced Studies - VISTAS, Pallavaram, Chennai.Email - viji.se@velsuniv.ac.in

⁷Assistant Professor, Department of Electronics and Communication Engineering, Vels Institute of Science Technology and Advanced Studies - VISTAS, Pallavaram, Chennai - 117. E mail - monish.ece147@gmail.com

DOI: 10.47750/pnr.2023.14.02.52

Abstract

Oral squamous cell carcinoma is the most widely recognized threatening mucosal neoplasm to influence the head and neck, representing almost 90% of the relative multitude of carcinogenic passings from one side of the planet to the other. This requests an early identification for treatment to diminish the rising death rate. It is challenging to anticipate in the beginning phase because of the absence of aptitude, tedious conventional strategies, and some of the time; the non-tumorous cells may intently look like tumorous cells. Along these lines, automatic identification of oral epidermal pictures can support better recognition models that could moderately perform with better exactness. This review presents a brain network-based mechanical characterization of 300 ordinary and 900 carcinogenic pictures. We have utilized the move learning technique by upgrading the five pre-prepared profound learning models for squamous cell carcinoma identification. Models like ResNet50, VGG16, DenseNet, GoogleNet, and AlexNet have been calibrated independently for additional utilization in highlight extraction.

Keywords: Convolution Neural Network (CNN), segmentation, Oral Squamous Cell Carcinoma (OSCC).

INTRODUCTION

Oral Squamous cell carcinoma is a heterogeneous gathering of malignant growth emerging from the mucosal covering of oral depression that records for almost 90% of the disease. It's exceptionally predominant in males than in females[1]. The related gamble factors are the utilization of liquor, and tobacco, unfortunate oral cleanliness, hereditary foundation, openness to human papillomavirus (HIV), way of life, and nationality. As of late, there has been an expansion in research philosophies in the clinical field with the assistance of Artificial knowledge. The convolution Neural Network models come convenient where there is a need to disengage highlights with more important accuracy[2].

Notwithstanding this, different CNN engineering, for example, Resnet, Googlenet, Densenet, VGG16, and AlexNet, have been tuned to accomplish great execution. In this paper, we used CNN engineering and motion learning to characterize oral squamous cell cancer. We've also done a detailed examination of the execution of individual models to determine the optimal organization for identification[3-5].

DATA AND METHODOLOGIES:

a) DATA SET:

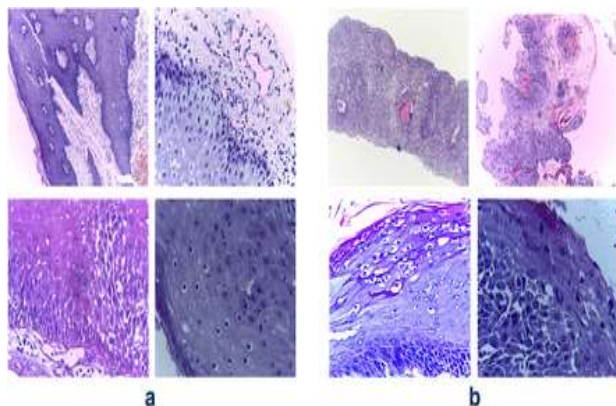


Figure 1: Vignettes of H&E stained oral biopsy images from the OSCC dataset capturing (a)normal epithelium and (b)cancerous epithelium

Kaggle has published the data set, and it comprises 1200 images, out of which 300 are non-cancerous and 900 are cancerous

b) DATA PREPROCESSING:

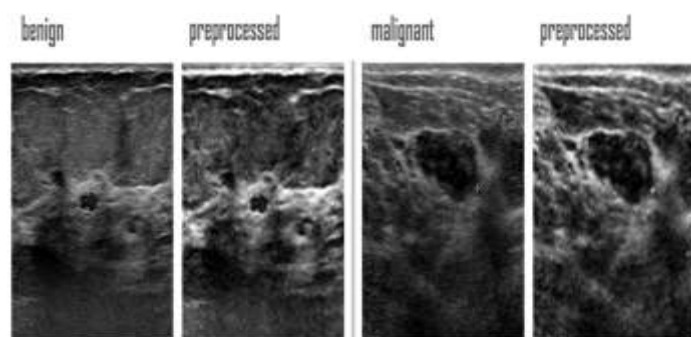


Figure 2: Shows the significant difference between the inputted image and the preprocessed data

Picture preprocessing is the preeminent advance in a picture characterization procedure. Profound learning requires the pictures to be of a similar size and kind[6]. Subsequently, it requires a progression of steps, for example, reshaping (molding the pictures to a similar aspect); normalizing the pixel values somewhere between 0 and 1 becomes obligatory to commit consistency among pictures.

c) DATA AUGMENTATION:

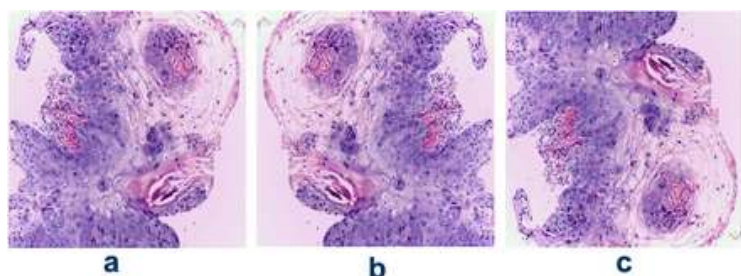


Figure 3: (a) Original image (b) Horizontal-flip (c) Vertical-flip

In the AI interaction, the size of the dataset assumes a significant part. 100 regular Scenarios could frequently happen, fitting When the preparation dataset is bigger than the testing dataset) and underfitting, while the testing dataset is bigger in numbers than the preparation dataset. Expansion assumes a huge part in dispensing these two classes of blunders[8-12]. Expansion is where changes like vertical flip and level flip expand the available size of the dataset[13].

d) NETWORK ARCHITECTURE

d.1) VGG16

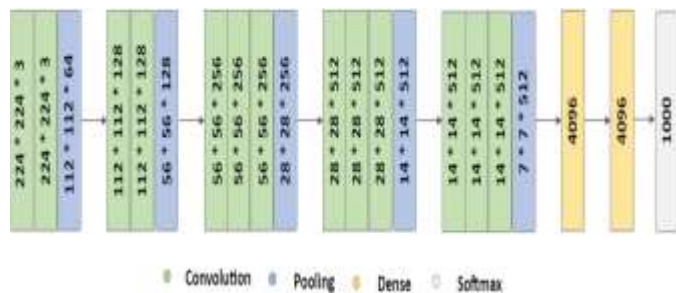


Figure 4: VGG16 engineering comprises five convolutional blocks (each followed by a pooling activity), two FC layers (each with 4096 hubs), and one Softmax layer (1000 hubs that approach the number of classes in the ImageNet dataset) toward the end.

VGG16 is a sixteen-subcaste profound learning engineering that comprises thirteen convolutional layers organized into five places and is traced by a pooling subcaste in which a 2x2 window is utilized. Two fully associated layers also trace it, each comprising 496 capitals[14-21]. The ultimate is the softmax subcaste that comments on individual classes to each picture chosen during the interaction.

d.2) GOOGLNET

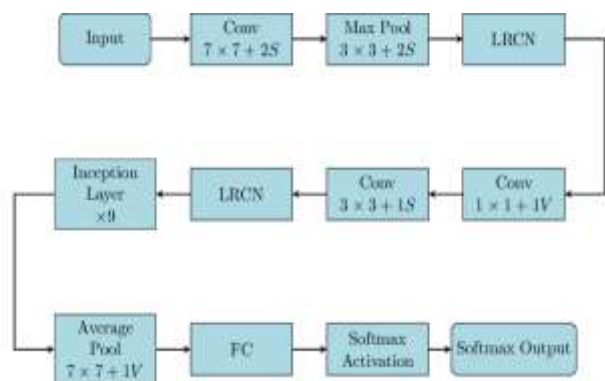


Figure 5: GoogLeNet engineering comprises three convolutional blocks.

GoogLeNet is a CNN reasoning piece of Google-trained professionals. GoogLeNet has 22 layers and uses the Inception module for the starting accuracy period. There are also totally connected layers with only 5 million limits, conveying it on various occasions more prominent than the Alexnet.

d.3) RESNET

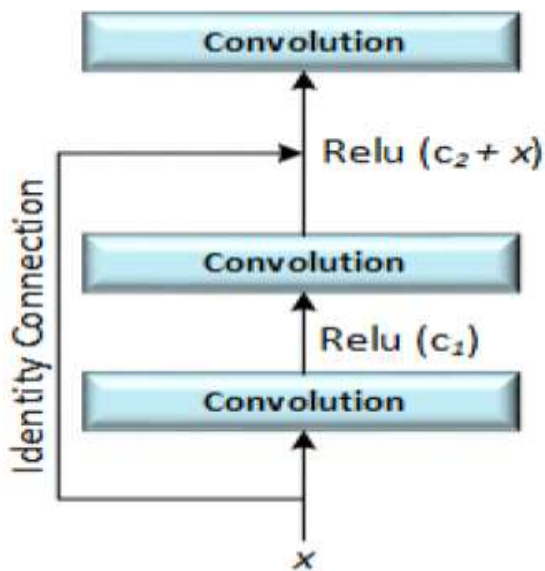


Figure 6: A lingering block with a personality association that passes input(x) straightforwardly to a later convolutional layer to limit disappearing inclination.

It appears to be the best model in Neural convolutional associations. A significant association also is used in leftover squares. The remaining associations involve several consecutive waiting modules arranged using the Resnet perspective[22]. It involves a 152-subcaste model for ImageNet. The application of resnet ought to be an indeed large number of layers, and the resnet is changed into an association, and subsequently, the medication commerce happens; in any case, the donation estimation might be lowered at specific times[23-26].

e) TRANSFER LEARNING:

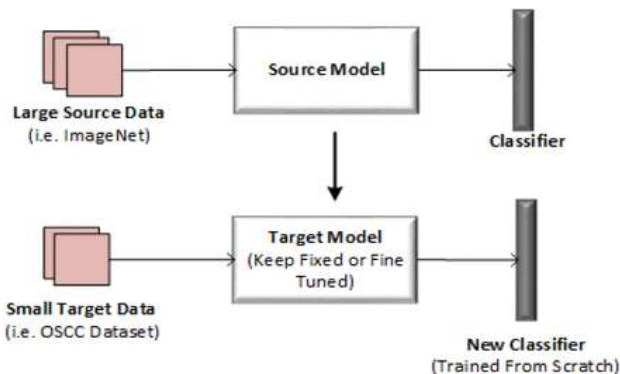


Figure 7: Transfer of information from a source model prepared on enormous information (for example, ImageNet) to an objective model with little information (for example, OSCC Dataset). The objective model is either kept fixed and utilized as a component extractor or calibrated and adjusted to the new undertaking. The recently added classifier to the objective model is prepared without any preparation.

Move learning is the interaction wherein the experience and information acquired from an educational experience are applied to another problem[27-32]. This way, different models can be utilized together, and the need to prepare models from the serrated is diminished. These pre-prepared models can consolidate and go about as information center point and help the model play out. These can likewise be tuned to make them go about as component – extractors[33].

f) MODEL TRAINING:

The model has been prepared to utilize a general 1000 pictures comprehensive of 900 cancerous and 300 non-carcinogenic pictures. To prepare these models, exchange learning has been conveyed.

f.1) FINE TUNING INDIVIDUAL MODELS:

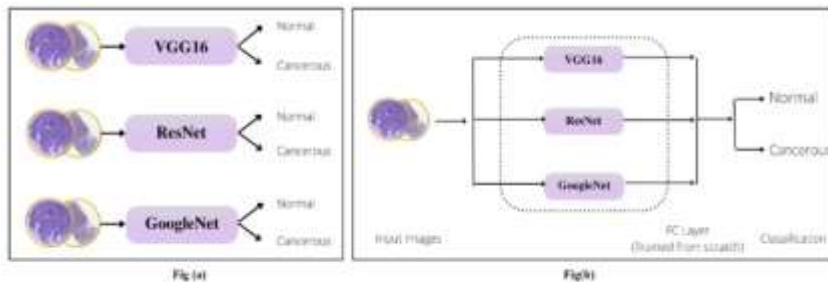


Figure 8: Flow outline of the model preparation (a) Pre-prepared VGG16, ResNet50, and GoogleNet are fine-tuned independently on the OSCC dataset (b) Features extricated by calibrated models are connected and gone through an FC layer. The connected model isn't controlled, while the FC layer is prepared without any preparation.

Here models engineering has been adjusted by highlighting these moved models one over the other rather than the softmax layer. At long last, the sigmoid layer has been embraced to anticipate precise class for the characterization in this manner[34]. Here just the upper layers are calibrated so that cutting-edge examples can be advanced as opposed to replicating straightforwardly, which sometimes could prompt overfitting issues.

f.2) CONCATENATED MODEL AS FEATURE EXTRACTOR:

Another model has been proposed by attaching the three tuned models. A completely Connected layer alongside a characterization has been added in this manner; these models go about as component extractors during the preparation stage[35]. This component extraction has been prepared to the model to cause them to characterize includes fittingly.

g) FUNCTIONS AND PARAMETERS

Classification Function	Sigmoid
Loss Function	Binary Cross-entropy
Learning Rate (Individual Model)	0.001
Learning Rate (Concatenated Model)	0.0001
Optimizer	Adam

h) MODEL EVALUATION

Approval has been performed for 200 pictures, comprehensive of occurrences from both classes. The testing dataset has pictures of both 100X and 400X amplification. The preparation and testing split was done before expansion, demonstrating that some testing dataset has unique pictures.

Certain exhibition measurements have been considered to assess the model's presentation.

1. Accuracy
2. Precision
3. Recall
4. F1-Score
5. Specificity
6. AUC value

These measurable measurements are the aftereffect of four results of the disarray framework. These measurable measures are the result of four results of the disarray frame. These are True negatives (TN), True Cons (TP), False Cons (FP), and False Negatives (FN). It's to be noticed that the misleading Cons (FP) are called type-1 boobs, and False Negatives (FN) are called type-2 mistakes.

A definitive ideal in a characterization computation is to amplify the good anticipation (True Cons and True Negatives) and simultaneously limit the inaccurate vaticinations (False Cons and False Negatives)[36].

Accuracy (1)

Accuracy is the proportion between the complete number of right expectations made and the absolute forecasts.

$$\text{Accuracy} = \frac{\text{True Positives} + \text{True Negatives}}{\text{All Samples}}$$

Precision (2)

Precision is defined as the correctly identified cancerous images to all the images predicted as cancerous by the model.

$$\text{Precision} = \frac{\text{True Positives}}{\text{Total Predicted Positives}}$$

Recall (3)

A recall is the proportion of accurately distinguished carcinogenic pictures to every one of the destructive pictures present.

$$\text{Recall} = \frac{\text{True Positives}}{\text{True Positives} + \text{False Negatives}}$$

Specificity (4)

Specificity is the proportion of accurately distinguished adverse outcomes to every one of the initial adverse outcomes.

$$\text{Specificity} = \frac{\text{True Negatives}}{\text{True Negatives} + \text{False Positives}}$$

F1 Score (5)

F1 Score is the harmonious means of perfection and recall.

$$\text{F1 Score} = \frac{2 \times (\text{Precision} \times \text{Recall})}{\text{Precision} + \text{Recall}}$$

It's calculated to consider both these criteria into account as a whole.

AUC (6)

AUC (Area Under Curve)- ROC (Receiver operating Characteristics) is a performance metric based on varying threshold values.

AUC - ROC metric indicates the model's capability in distinguishing the classes.

Mathematically, it can be created by combining TPR (True Positive Rate) that's perceptivity and recall vs FPR (False Positive Rate) that's 1- particularity.

$$\begin{aligned} \text{True Positive Rate (TPR)} \\ \text{also called sensitivity/recall/hit rate} &= \frac{TP}{P} = \frac{TP}{TP + FN} \end{aligned}$$

$$\begin{aligned} \text{False Positive Rate (FPR)} \\ \text{also called fall out} &= \frac{FP}{N} = \frac{FP}{FP + TN} \end{aligned}$$

RESULT AND DISCUSSION

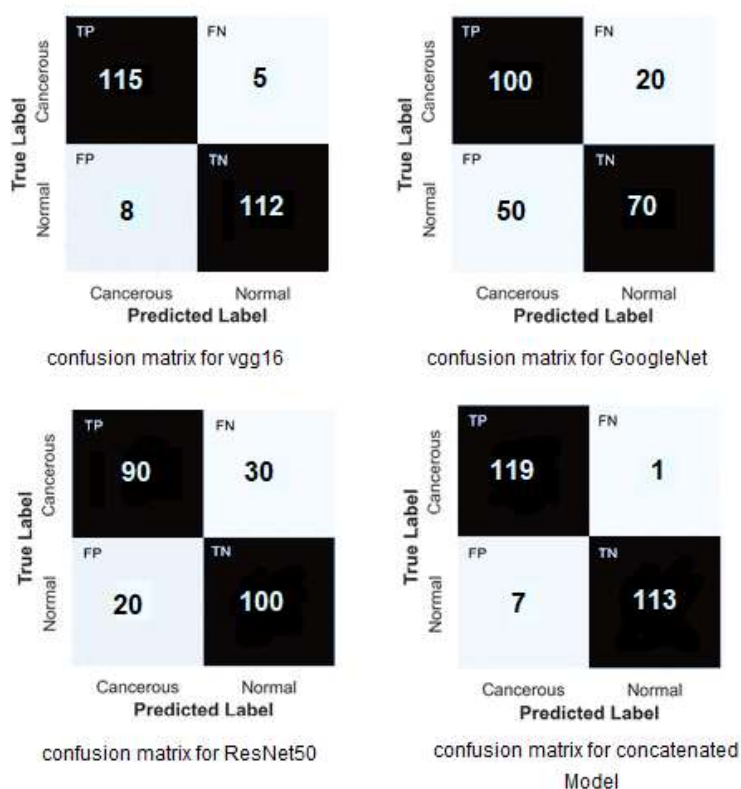


Figure 9: confusion matrices for the network architectures

The confusion matrix shows the detailed performance analysis of each model on the test data. It can be observed that the concatenated model performs well when compared to the other CNN architecture, such as VGG16, GOOGLNET, and RESNET10. It can be observed from the confusion matrix that the concatenated model has high TP (true cons) and TN (true negative) values[37]. Among the complication models collectively, the vgg16 armature of the CNN has good performance when compared with Resnet and Google net infrastructures[38].

Model	Accuracy	Precision	Recall	F1 Score
VGG 16	94.58%	0.96	0.93	0.95
GoogleNet	70.83%	0.83	0.67	0.74
ResNet50	79.17%	0.75	0.82	0.78
Concatenated Model	96.67%	0.99	0.94	0.97

It can be observed from the performance table that the concatenated model has higher accuracy (96.67%), precision (0.99), recall Score (0.94), and f1-score (0.97), followed by VGG16 (accuracy of 94.58 %), Resnet (79.17%), googlenet (70.83%). The high accuracy value of 0.97 indicates that the concatenated model has the excellent capability of discerning between the two classes.

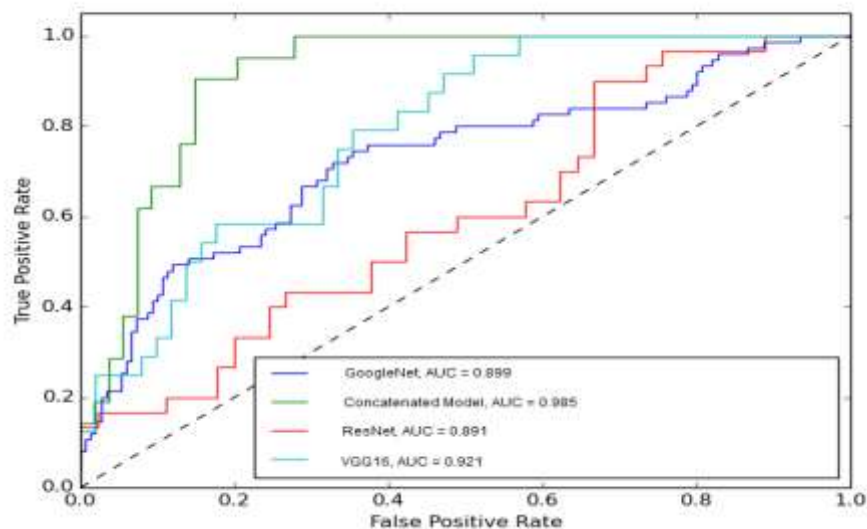


Figure10: Plot depicting ROC curve and AUC value for each armature

CONCLUSION

In a new report, Sana Ullah blazoned that the superior prosecution of connected model is on the grounds that the contained highlights might contain different patterns, circularity, roundness, and compaters from a single descriptor. Accordingly, this is the explanation; the mix of different pre-prepared CNN engineering supported up the donation of move literacy and latterly displacing the application of conventional single model CNN armature is adequate. At long last, we allowed the donation of the three calibrated models with the connected model. It was seen that the connected model yielded the swish issues and outflanked the singular models. A little test information may not fully address the information gathered in reality and might not have a great addition to the appropriation in preparing information. The OSCC dataset employed in this study was small and imbalanced, with 290 ordinary and 934 carcinogenic cases. We could use just 120 images for assessing the model, which might be satisfactory but still not great for meaning authentic operations. In the future, we anticipate working on this by producing enormous datasets that, in a perfect world, have matched classes. Also, we may likewise consider exercising different cross-blessing ways that are more suitable for approving the model on an enormous quantum of information.

REFERENCES

- [1]. Palaskar, V.Khedekar, S.Salaskar, Sahu. Transfer learning for oral cancer detection using microscopic images, arXiv preprint arxiv:2011.11610(2020) .
- [2]. Bourass Youssef, Zouaki Hamid, Bahri Abdelkhalak, "Computer-aided diagnostics of facial and oral cancer", IEEE Transactions, 2018 Third World Conference on Complex Systems (WCCS).

- [3]. Konstantina Kourou, Themis P. Exarchos, Konstantinos P. Exarchos, Michalis V. Karamouzis, Dimitrios I. Fotiadis, "Computational and Structural Biotechnology Journal", Machine learning applications in malignant growth visualization and expectation, Volume 13, 2015, Pages 8-17.
- [4]. Mingyuan Xin, Yong Wang, "Research on image classification model based on deep convolutional neural network", EURASIP Journal on Image and Video Processing volume 2019, Article number: 40 (2019).
- [5] Shikha Agrawal, Jitendra Agrawal, "Neural Network Techniques for Cancer Prediction: A Survey, Procedia Computer Science 60(2015) 769-774.
- [6] N.Das,E.Hussain,L. B.Mahanta,Automated classification of cells into multiple classes in epithelial tissue of oral squamous cell carcinoma using transfer learning and convolutional neural network, Neural Networks 128(2020)47–60.
- [7] David, D. S., Arun, S., Sivaprakash, S., Raja, P. V., Sharma, D. K. et al. (2022). Enhanced Detection of Glaucoma on Ensemble Convolutional Neural Network for Clinical Informatics. CMC-Computers, Materials & Continua, 70(2), 2563–2579.
- [8] David, D. S., Anam, M., Kaliappan, C., Arun, S., Sharma, D. K. et al. (2022). Cloud Security Service for Identifying Unauthorized User Behaviour. CMC-Computers, Materials & Continua, 70(2), 2581–2600.
- [9] Jayachandran, A., and D. Stalin David. "Textures and Intensity Histogram Based Retinal Image Classification System Using Hybrid Colour Structure Descriptor." Biomedical and Pharmacology Journal, vol. 11, no. 1, 2018, p. 577+. Accessed 12 Feb. 2021.
- [10] D. Stalin David, 2019, "Parasagittal Meningioma Brain Tumor Classification System based on MRI Images and Multi Phase level set Formulation", Biomedical and Pharmacology Journal, Vol.12, issue 2, pp.939-946.
- [11] Thendral, R., & David, D. S. (2022). An Enhanced Computer Vision Algorithm for Apple Fruit Yield Estimation in an Orchard. In Artificial Intelligence and Technologies (pp. 263-273). Springer, Singapore.
- [12] D. S. David and A. Jeyachandran, "A comprehensive survey of security mechanisms in healthcare applications," 2016 International Conference on Communication and Electronics Systems (ICCES), Coimbatore, 2016, pp. 1-6, doi: 10.1109/CESYS.2016.7889823.
- [13] Stalin David, D., Jayachandran, A. A new expert system based on hybrid colour and structure descriptor and machine learning algorithms for early glaucoma diagnosis. Multimed Tools Appl 79, 5213–5224 (2020). <https://doi.org/10.1007/s11042-018-6265-1>.
- [14] D Stalin David, A Jayachandran, 2018,Robust Classification of Brain Tumor in MRI Images using Salient Structure Descriptor and RBF Kernel-SVM, TAGA Journal of Graphic Technology, Volume 14, Issue 64, pp.718-737.
- [15] D Stalin David, 2016, Robust Middleware based Framework for the Classification of Cardiac Arrhythmia Diseases by Analyzing Big Data, International Journal on Recent Researches In Science, Engineering & Technology, 2018, Volume 4, Issue 9, pp.118-127.
- [16] M. Rajdhev, D. Stalin David, "Internet of Things for Health Care", International Journal of Scientific Research in Computer Science, Engineering and Information Technology (IJSRCSEIT), ISSN : 2456-3307, Volume 2 Issue 2, pp. 800-805, March-April 2017.
- [17] P. Prasanth, D. Stalin David, "Defensing Online Key detection using Tick Points", International Journal of Scientific Research in Computer Science, Engineering and Information Technology (IJSRCSEIT), ISSN : 2456-3307, Volume 2 Issue 2, pp. 758-765, March-April 2017.
- [18] A.Sudalaimani, D. Stalin David, "Efficient Multicast Delivery for Data Redundancy Minimization over Wireless Data Centres", International Journal of Scientific Research in Computer Science, Engineering and Information Technology (IJSRCSEIT), ISSN : 2456-3307, Volume 2 Issue 2, pp. 751-757, March-April 2017.
- [19] R. Abish, D. Stalin David, "Detecting Packet Drop Attacks in Wireless Sensor Networks using Bloom Filter", International Journal of Scientific Research in Computer Science, Engineering and Information Technology (IJSRCSEIT), ISSN : 2456-3307, Volume 2 Issue 2, pp. 730-735, March-April 2017.
- [20] A.Vignesh, D. Stalin David, "Novel based Intelligent Parking System", International Journal of Scientific Research in Computer Science, Engineering and Information Technology (IJSRCSEIT), ISSN : 2456-3307, Volume 2 Issue 2, pp. 724-729, March-April 2017.
- [21] D Stalin David, 2020, 'Diagnosis of Alzheimer's Disease Using Principal Component Analysis and Support Vector Machine, International Journal of Pharmaceutical Research, Volume 12, Issue 2, PP.713-724.
- [22] Jaswanth K S, Dr. D. Stalin David, "A Novel Based 3d Facial Expression Detection Using Recurrent Neural Network", International Journal of Scientific Research in Computer Science, Engineering and Information Technology (IJSRCSEIT), ISSN : 2456-3307, Volume 6 Issue 2, pp. 48-53, March-April 2020.
- [23] D. Jayakumar; Dr.U. Palani; D. Raghuraman; Dr.D. StalinDavid; D. Saravanan; R. Parthiban; S. Usharani. "CERTAIN INVESTIGATION ON MONITORING THE LOAD OF SHORT DISTANCE ORIENTEERING SPORTS ON CAMPUS BASED ON EMBEDDED SYSTEM ACCELERATION SENSOR". European Journal of Molecular & Clinical Medicine, 7, 9, 2021, 2477-2494.

- [24] R. Parthiban; S. Usharani; D. Saravanan; D. Jayakumar; Dr.U. Palani; Dr.D. StalinDavid; D. Raghuraman. "PROGNOSIS OF CHRONIC KIDNEY DISEASE (CKD) USING HYBRID FILTER WRAPPER EMBEDDED FEATURE SELECTION METHOD". *European Journal of Molecular & Clinical Medicine*, 7, 9, 2021, 2511-2530.
- [25] Dr.U. Palani; D. Raghuraman; Dr.D. StalinDavid; R. Parthiban; S. Usharani; D. Jayakumar; D. Saravanan. "AN ENERGY-EFFICIENT TRUST BASED SECURE DATA SCHEME IN WIRELESS SENSOR NETWORKS". *European Journal of Molecular & Clinical Medicine*, 7, 9, 2021, 2495-2510.
- [26] David, D. D. S., Parthiban, R., Jayakumar, D., Usharani, S., Raghuraman, D., Saravanan, D., & Palani, D. U. (2021). Medical wireless sensor network coverage and clinical application of MRI liver disease diagnosis. *European Journal of Molecular & Clinical Medicine*, 7(9), 2559-2571.
- [27] Raman, D. R., Saravanan, D., Parthiban, R., Palani, D. U., David, D. D. S., Usharani, S., & Jayakumar, D. (2021). A study on application of various artificial intelligence techniques on internet of things. *European Journal of Molecular & Clinical Medicine*, 7(9), 2531-2557.
- [28] Saravanan, D., David, D. D. S., Usharani, S., Raghuraman, D., Jayakumar, D., Palani, D. U., ... & Villupuram, P. (2020). An Energy Efficient Traffic-Less Channel Scheduling Based Data Transmission In Wireless Networks. *European Journal of Molecular & Clinical Medicine*, 7(11), 5704-5722.
- [29] Usharani, S., Jayakumar, D., Palani, D. U., Raghuraman, D., Parthiban, R., Saravanan, D., & David, D. D. S. (2020). Industrialized service innovation platform based on 5g network and machine learning. *European Journal of Molecular & Clinical Medicine*, 7(11), 5684-5703.
- [30] P Gopala Krishna, D StalinDavid, "AN EFFECTIVE PARKINSON'S DISEASE PREDICTION USING LOGISTIC DECISION REGRESSION AND MACHINE LEARNING WITH BIG DATA", *Turkish Journal of Physiotherapy and Rehabilitation*; 32(3), Pages 778-786.
- [31] Jaswanth K S, Dr. D. Stalin David, "A Novel Based 3d Facial Expression Detection Using Recurrent Neural Network", *International Journal of Scientific Research in Computer Science, Engineering and Information Technology (IJSRCSEIT)*, ISSN : 2456-3307, Volume 6 Issue 2, pp. 48-53, March-April 2020.
- [32] T. Babu, H. Roopa, Arvind Kumar Shukla, D. Stalin David, S. Jayadatta, A.S. Rajesh, Internet of things-based automation design and organizational innovation of manufacturing enterprises, *Materials Today: Proceedings*, 2021, ISSN: 2214-7853, <https://doi.org/10.1016/j.matpr.2021.10.459>.
- [33] M. Chandragowda, C. Gnanavel, D. Saravanan, D. Stalin David, R. Parthiban, A.S. Rajesh, Consequence of silanee combination representative on the mechanical possessions of sugarcane bagasse and polypropylene amalgams, *Materials Today: Proceedings*, 2021, ISSN 2214-7853, <https://doi.org/10.1016/j.matpr.2021.10.455>.
- [34] T.V.V. Pavan Kumar, Shafqat Nabi Mughal, Radhika Gautamkumar Deshmukh, S. Gopa Kumar, Yogendra Kumar, D. Stalin David, A highly consistent and proficient class of multiport dc-dc converter based sustainable energy sources, *Materials Today: Proceedings*, 2021, ISSN 2214-7853, <https://doi.org/10.1016/j.matpr.2021.10.458>.
- [35] David, D.S. Enhanced glaucoma detection using ensemble based CNN and spatially based ellipse fitting curve model. *J Ambient Intell Human Comput* (2021). <https://doi.org/10.1007/s12652-021-03467-4>
- [36] S. Rishi, S. Debnath, S. Dewani, D. S. David, R. A. Jalee and M. M. A. Zahra, "AI-Based convolute Neural Approach Management To Predict The RNA Structure," 2022 2nd International Conference on Advance Computing and Innovative Technologies in Engineering (ICACITE), 2022, pp. 2224-2228, doi: 10.1109/ICACITE53722.2022.9823922.
- [37] M. Vargheese, S. Vanithamani, D. S. David and G. R. K. Rao, "Design of fuzzy logic control framework for qos routing in manet," *Intelligent Automation & Soft Computing*, vol. 35, no.3, pp. 3479-3499, 2023.
- [38] A Srinivasa Rao; Brahmadesam Viswanathan Krishna; D Saravanan; D Beulah David; O Rama Devi; Anju Asokan; D Stalin David. "Supervision calamity of public opinion actions based on field programmable gate array and machine learning". *International Journal of Nonlinear Analysis and Applications*, 12, 2, 2021, 1187-1198. doi: 10.22075/ijnaa.2021.5195.