

Adaptive Family-Based Stroke Prevention in Communities: A Systematic Review

Parellangi^{1,2}, Muhammad Syafar², Sukri Palutturi², Agus Bintara Birawida², Anwar Mallongi²

¹School of Nursing, Politeknik Kesehatan Kementerian Kesehatan Kalimantan Timur, Indonesia

²Faculty of Public Health, Hasanuddin University, Makassar, Indonesia

Abstract

Objective: this study aimed to identify a stroke prevention model with a family approach.

Methods: this systematic review is based on the 2015 Preferred Reporting Items for Systematic Reviews and Meta-Analysis (PRISMA) guideline. Articles were obtained from the PubMed and Google Scholar databases. Each article was assessed using eight criteria from the Strengthening the Reporting of Observational studies in Epidemiology (STROBE): sample size, sampling technique, response rate, outcome measures, statistical analysis, use of confounding, study limitations, and ethical considerations. 8 out of 2065 articles were used to develop this study.

Results: family support plays an important role in shaping stroke prevention behavior, both primary and secondary, through risk factor management and knowledge provision.

Conclusions: family support is one of the approaches to stroke prevention in reducing the burden of stroke. Stroke prevention by the family can be achieved by educating patients about stroke and providing support and encouragement for risk factor management.

Keywords: stroke, prevention, family, knowledge, risk factor.

INTRODUCTION

Stroke is the second leading cause of death in the world with a rate of 85%, mostly in low- and middle-income countries.¹ Cardiovascular disease and poor lifestyle are risk factors for stroke.^{2,3} Poor habits contribute 90% to the incidence of stroke.⁴ Long recovery time and high cost of stroke treatment become an economic burden for the patient, the patient's family and the country.^{5–7}

The burden of stroke increases if there is a relapse. Patients with stroke have a high risk of recurrent stroke.⁸ The number of recurrent strokes increases with the length of time, which is around 3-40%.⁵ Primary and secondary prevention of stroke is needed to reduce the burden of stroke.⁸

Primary prevention is carried out by adopting a healthy lifestyle and identifying and managing risk factors.⁹ Meanwhile, secondary prevention is carried out by modifying modifiable risk factors, antiplatelet therapy for non-cardioembolic ischemic stroke, anticoagulation for cardioembolic stroke, and intervention for symptomatic carotid stenosis.¹⁰ Optimal secondary prevention therapy can prevent recurrent stroke by up to 80%.¹¹

Address for correspondence: Parellangi

School of Nursing, Politeknik Kesehatan Kementerian Kesehatan Kalimantan Timur, Indonesia
Email: parellangikaltim@gmail.com

Access this article online

Quick Response Code:



Website:
www.pnrjournal.com

DOI:
10.47750/pnr.2023.14.01.013

This is an open access journal, and articles are distributed under the terms of the Creative Commons Attribution-NonCommercial-ShareAlike 4.0 License, which allows others to remix, tweak, and build upon the work non-commercially, as long as appropriate credit is given and the new creations are licensed under the identical terms.

For reprints contact: pnjournal@gmail.com

How to cite this article: Parellangi, Muhammad S, Sukri P, Agus Bintara B, Anwar M, Adaptive Family-Based Stroke Prevention in Communities: A Systematic Review, J PHARM NEGATIVE RESULTS 2023;14(1): 82-86.

This shows that stroke can be prevented by planning and implementing the best strategies.¹² Social support from family has a positive effect on disease prevention and self-management.¹³

Family caregivers can improve medication adherence, diet, and alertness in routine control.¹⁴ The Family Adaptive Behavior model is an effective model for implementing family-based stroke prevention strategy. This model is built upon the principle that families can adapt to various stimuli that may affect the health of family members.¹⁵ Support and knowledge from the family can motivate patients at risk of stroke to commit to prevention.¹⁶ Therefore, this study aimed to identify an adaptive family-based stroke prevention model.

METHODS

Search Strategy

This systematic review referred to the 2020 Preferred Reporting Items for Systematic Review and Meta Analysis (PRISMA) guideline.¹⁷ The literature sources were the PubMed and Google Scholar databases. The search included worldwide research published in 2011-2022. Articles retrieved from each database were imported into Mendeley. The combination of keywords used in the search was “stroke”, “prevention”, “family”, and “risk factors”.

Inclusion and Exclusion

The inclusion criteria of the article were (a) the study sample was stroke patients or families of patients at risk of stroke; (b) discussing the role of the family in the prevention of stroke; (c) quantitative research; (d) written in English; and (e) published from July 2011-July 2022.

Data Extraction

The extracted data were variables related to the role of the family in preventing the incidence of stroke. All articles were imported into Mendeley and duplication selection was

performed and followed by reading the title and abstract. The appropriate articles were further selected based on the inclusion and exclusion criteria. Selected articles were re-sorted by reading the entire contents of the article. Selected articles were included in the synthesis table.

Quality Assessment

The STROBE (Strengthening the Reporting of Observational Studies in Epidemiology) was used to assess the reviewed studies. Of the 22 STROBE assessment items, 8 items were taken, namely: description of sample size, description of sample methodology, response rate calculation, outcome measurement, description of statistical analysis, confounding control, description of study limitations, and research ethics. The study quality categories were measured based on the number of items met. Each item met was given a score of 1. The overall scores were added up to determine the quality of the studies. The study quality was categorized into poor (0-3), moderate (4-6), and good (7-8).¹⁸ Articles that are included in the good category can be assessed further.

RESULTS

A total of 2065 articles were gathered from PubMed and Google Scholar. 1050 articles obtained after deleting duplicate articles. After title screening, 1012 articles were excluded. Furthermore, 15 articles were excluded after reading the abstracts. Finally, 8 articles were obtained to compose this systematic review. The table shows a summary of the studies; 4 studies in America, 3 studies in Asia, and 1 study in Africa. The sample size ranged from 160 to 1259 participants and all studies were rated of moderate to good quality. The collected studies showed that family support played an important role in shaping stroke prevention behavior both primary and secondary through risk factor management and improving knowledge.

Table 1. Summary of Selected Studies and Conclusions of Research Results

No.	Author, Year, Country	Study Design	Sample	Journal Name	Intervention Method	Quality Assessment	Finding
1.	(Cabral et al, 2012) Brazil / USA	Randomized clinical trial	594 stroke patients	<i>American Journal of Public Health</i>	FHP intervention (<i>Family Health Program</i>) with visits from health workers, checking medical history, and making workshops	6	Patients in the FHP group had a lower incidence of stroke (30.1%) than the non-FHP group (36.2%).
2.	(Kronish et al, 2014) New York /	Randomized clinical trial	600 stroke patients or TIA	Stroke	Peer education interventions, weekly 6-week workshops with a chronic disease self-management	6	The proportion of controlled blood pressure was greater and there was a significant decrease in systolic blood pressure

	USA				program model		in the intervention group (P=0,04).
3.	(He et al, 2015) China / Asia	Randomized clinical trial	279 5th graders	BMJ	Intervention: creating curriculum and education on salt reduction	7	The education program was effective in reducing salt intake in children and their families with the mean salt intake in the intervention versus control group being 1.9 g/day versus 2.9 g/day after being given the education program.
4.	(Komolafe et al, 2020) Nigeria / Afrika	Randomized clinical trial	1259 adolescents	Journal of Stroke and Cerebrovascular Disease	Intervention: providing education on understanding, risk factors, symptoms, and appropriate responses for stroke patients	7	Stroke education was effective in forming awareness to prevent stroke in adolescent school children. Knowledge score in the intervention group was higher than the control group.
5.	(An et al, 2018) USA	Randomized clinical trial	160 people aged ≥65 years	Journal of Neuroscience Nursing	Intervention: educational programs and discussions on stroke knowledge and lifestyle changes	6	Primary stroke prevention is effective for improving stroke knowledge and the number of steps and reducing the amount of sodium and fat consumption.
6.	(Menkin et al, 2019) USA	Randomized clinical trial	233 adults aged ≥60 years	American Heart Association	Intervention: Education on stroke prevention and promotion of walking	6	Increase in the average number of daily steps, fluctuating in nature but there is an increase in stroke preparedness (p<0.001).
7.	(Choi et al, 2015) Hong Kong / Asia	Cohort	577 ischemic stroke patients	Hong Kong Medical Journal	Intervention: Secondary stroke prevention program	5	The stroke prevention program could significantly reduce systolic blood pressure, glycated hemoglobin levels, and LDL levels in the control group.
8.	(Kurniawati et al, 2016) Indonesia / Asia	Cross-sectional	165 stroke patients	Indonesian conference in clinical pharmacy	Identifying the level of adherence to taking medication	6	Lack of family support (8.8%) is the fourth most common reason for non-adherence to taking medication.

DISCUSSION

Stroke is a disease that warrants special attention because of its burden and impact. Individuals with a high risk of stroke and their family members need to receive information about risk factor management strategies.¹⁹ The stream of

motivation and support from experienced people, family members and health workers can facilitate the implementation of stroke prevention.¹⁶ The family is the closest environment of the individual, thus, it can play a major role in influencing health.

The Family Health Program is a program with a family and

community approach in which health workers provide comprehensive care.²⁰ Family health programs can reduce the risk of stroke recurrence and death to a minimum of two visits a year.¹² The activities carried out are monthly visits to high-risk patients by health workers, checking family members' medical history regularly and conducting workshops on chronic disease management guidelines to bolster knowledge.¹² Better knowledge can improve individual awareness to reduce stroke risk by changed behavior.

Menkin et al conducted a randomized clinical trial with interventions in the form of promoting the benefits of walking and the dangers of stroke as well as monitoring walking activities and telephone reminders. The results of this study showed that the intervention group had a better daily walking score change than the control group. In addition, the frequency of calling 911 when stroke symptoms occurred was increasing in the intervention group. This suggests that there is a continuous improvement in stroke preparedness.²¹ Physical activity independently reduces the risk of stroke and lowers other cardiovascular risk factors.^{22,23} It is more likely for an individual to modify their lifestyle such as physical activity and dietary habit when encouragement from the family is present.⁴

The study by An et al (2018) reported that there was a decrease in sodium and total fat intake after being given education about stroke and lifestyle changes. The intervention group showed a greater increase in stroke knowledge and a decrease in sodium and total fat consumption.²⁴ Knowledge can motivate and empower patients so that patients can determine the right way of self-control, adopt a healthy lifestyle, pharmacological choices, psychosocial adjustments due to chronic illness, and utilize resources to increase knowledge.³ Families with good knowledge can practice good health behaviors as early as possible.³ This is supported by the study of Jiang et al who reported that health behaviors were correlated with family communication. Improved communication encourages the formation of good health behavior.²⁵

One approach to improve secondary stroke prevention behavior is to take advantage of the role of peer educators, such as families. Peer educators are public health workers or people who are trusted and respected as members of the community according to the culture and language of the target population. The study by Kronish et al (2014) reported that there was a significant change in systolic blood pressure in the intervention group after being provided intervention by peer educators.²⁶

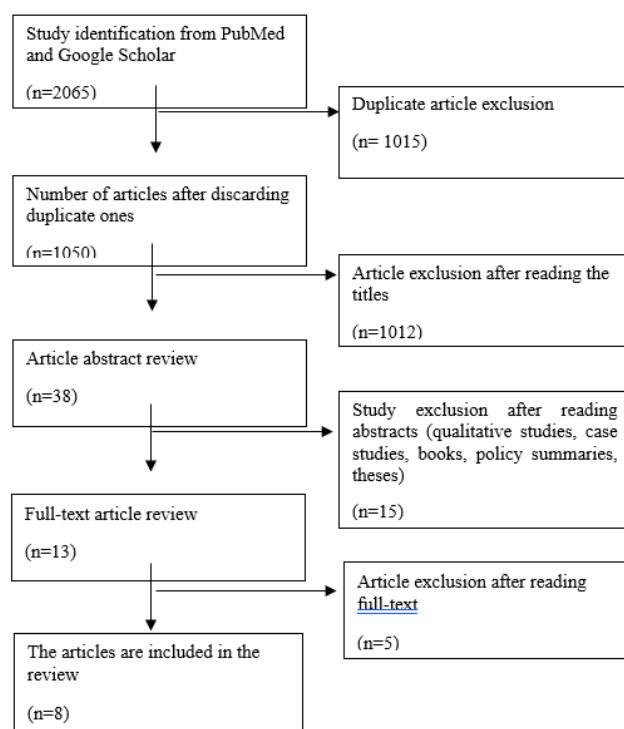


Chart 1. Article Selection Flowchart

Stroke prevention with a family approach can also be applied at the school level. Komolafe's et al study showed that subjects in the intervention group had a higher and statistically significant knowledge score where the increase in score was in line with increased knowledge and awareness about stroke.²⁷ Providing education about salt or sodium intake and its effect on cardiovascular can reduce the level of salt consumption in children and adults.²⁸ The reduction in salt intake was accompanied by a significant reduction in systolic blood pressure in adults. Meta-analyses reported that a 1 g/day reduction in salt intake could reduce systolic blood pressure by about 1 mmHg.²⁹ A low-salt diet since childhood can reduce the increase in blood pressure with age, thus preventing the occurrence of high blood pressure and cardiovascular disease in later life.²⁸⁻³³

CONCLUSIONS

Family support is one approach to stroke prevention in order to reduce the burden of stroke. Stroke prevention by the family can be done through providing education about stroke and support and encouragement for risk factor management. The weakness of this systematic review is that there are not many observational or experimental studies to support this study. Therefore, research on stroke prevention with a family approach needs to be encouraged.

Conflicts of Interest

The author declares there is no conflict of interest.

REFERENCES

1. Feigin VL., Forouzanfar MH., Krishnamurthi R., Mensah GA., Connor M., Bennett DA., et al. Global and regional burden of stroke during 1990-2010: findings from the Global Burden of Disease Study 2010. vol. 383. vol. 383. 2014.
2. Suddarth's B&. HANDBOOK FOR Medical-Surgical Nursing. Twelfth. US: Wolters Kluwer; 2010.
3. Marlina., Badaruddin., Fikarwin Z., Lubis R. Model of family health empowerment preventing stroke in Puskesmas Ulee Kareng Banda Aceh. Journal of Physics: Conference Series, vol. 1460. Institute of Physics Publishing; 2020.
4. Wong HJ., Harith S., Lin Lua P., Ibrahim KA. A Qualitative Study Exploring Understanding and Perceptions of Stroke Survivors Regarding Healthy Lifestyle Changes for Secondary Prevention. vol. 17. vol. 17. 2021.
5. Dharma KK., Damhudi D., Yarden N., Haeriyanto S. Increase in the functional capacity and quality of life among stroke patients by family caregiver empowerment program based on adaptation model. Int J Nurs Sci. 2018;5(4):357-64, doi: 10.1016/j.ijnss.2018.09.002.
6. Mei YX., Lin B., Zhang W., Yang D bin., Wang SS., Zhang ZX., et al. Benefits finding among Chinese family caregivers of stroke survivors: A qualitative descriptive study. BMJ Open. 2020;10(10), doi: 10.1136/bmjopen-2020-038344.
7. Veras M., Stewart J., Deonandan R., Tatmatsu-Rocha JC., Higgins J., Poissant L., et al. Cost Analysis of a Home-Based Virtual Reality Rehabilitation to Improve Upper Limb Function in Stroke Survivors. Glob J Health Sci. 2020;12(2):98, doi: 10.5539/gjhs.v12n2p98.
8. Choi YK., Han JH., Li R., Kung K., Lam A. Implementation of secondary stroke prevention protocol for Ischaemic stroke patients in primary care. Hong Kong Medical Journal. 2015;21(2):136-42, doi: 10.12809/hkmj144236.
9. Owolabi MO., Thrift AG., Mahal A., Ishida M., Martins S., Johnson WD., et al. Primary stroke prevention worldwide: translating evidence into action. Lancet Public Health. 2022:e74-85, doi: 10.1016/S2468-2667(21)00230-9.
10. Diener HC., Weimar C. Update of secondary stroke prevention. Nephrology Dialysis Transplantation. 2009;1718-24, doi: 10.1093/ndt/gfp068.
11. Prabhakaran S., Chong JY. Risk Factor Management for Stroke Prevention. vol. 20. vol. 20. 2014.
12. Cabral NL., Franco S., Longo A., Moro C., Buss TA., Collares D., et al. The Brazilian Family Health Program and secondary stroke and myocardial infarction prevention: A 6-year cohort study. Am J Public Health. 2012;102(12), doi: 10.2105/AJPH.2012.301024.
13. Adejoh SO. Family unit in the context of diabetes management among the Igala, North-Central, Nigeria. A Journal of the BSA MedSoc Group. 2012;6(3):24-35.
14. Riegel B., Moser DK., Buck HG., VaughanDickson V., B.Dunbar S., Lee CS., et al. Self-care for the prevention and management of cardiovascular disease and stroke: A scientific statement for healthcare professionals from the American heart association. J Am Heart Assoc. 2017;6(9), doi: 10.1161/JAHA.117.006997.
15. Dharma KK., Damhudi D., Yarden N., Haeriyanto S. Increase in the functional capacity and quality of life among stroke patients by family caregiver empowerment program based on adaptation model. Int J Nurs Sci. 2018;5(4):357-64, doi: 10.1016/j.ijnss.2018.09.002.
16. Lawrence M., Pringle J., Kerr S., Booth J. Stroke survivors and family members perspectives of multimodal lifestyle interventions for secondary prevention of stroke and transient ischemic attack: A qualitative review and meta-aggregation. Disabil Rehabil. 2016;11-21, doi: 10.3109/09638288.2015.1031831.
17. Page MJ., McKenzie JE., Bossuyt PM., Boutron I., Hoffmann TC., Mulrow CD., et al. The PRISMA 2020 statement: An updated guideline for reporting systematic reviews. The BMJ. 2021, doi: 10.1136/bmj.n71.
18. Tahangnacca M., Amiruddin R., Ansariadi., Syam A. Model of stunting determinants: A systematic review. Enferm Clin. 2020;30:241-5, doi: 10.1016/j.enfcli.2019.10.076.
19. Gladstone DJ., Patrice Lindsay M., Douketis J., Smith EE., Dowlatshahi D., Wein T., et al. Canadian Stroke Best Practice Recommendations: Secondary Prevention of Stroke Update 2020 – ADDENDUM. Canadian Journal of Neurological Sciences / Journal Canadien des Sciences Neurologiques. 2022;1-1, doi: 10.1017/cjn.2022.57.
20. Coletiva S., Basílio da Gama R., Paim J. Series The Brazilian health system: history, advances, and challenges. Lancet. 2011;377:1778-97, doi: 10.1016/S0140.
21. Menkin JA., McCreath HE., Song SY., Carrillo CA., Reyes CE., Trejo L., et al. "Worth the Walk": Culturally Tailored Stroke Risk Factor Reduction Intervention in Community Senior Centers. J Am Heart Assoc. 2019;8(6), doi: 10.1161/JAHA.118.011088.
22. Murphy M., Nevill A., Neville C., Biddle S., Hardman A. Accumulating brisk walking for fitness, cardiovascular risk, and psychological health. Med Sci Sports Exerc. 2002;34(9):1468-74, doi: 10.1249/01.MSS.0000027686.50344.77.
23. Bravata DM., Crystal Smith-Spangler M., Sundaram V., Allison Gienger ML., Nancy Lin B., Robyn Lewis S., et al. Using Pedometers to Increase Physical Activity and Improve Health A Systematic Review. 2007.
24. An M., Nahm ES., Shaughnessy M., Storr CL., Han HR., Lee J. A Pilot Primary Stroke Prevention Program for Elderly Korean Americans. Journal of Neuroscience Nursing. 2018;50(6):327-33, doi: 10.1097/JNN.0000000000000397.
25. Jiang SS., Shen LP., Ruan HF., Li L., Gao LL., Wan LH. Family function and health behaviours of stroke survivors. Int J Nurs Sci. 2014;1(3):272-6, doi: 10.1016/j.ijnss.2014.05.024.
26. Kronish IM., Goldfinger JZ., Negron R., Fei K., Tuhm S., Arniella G., et al. Effect of peer education on stroke prevention: The prevent recurrence of all inner-city strokes through education randomized controlled trial. Stroke. 2014;45(11):3330-6, doi: 10.1161/STROKEAHA.114.006623.
27. Komolafe MA., Olorunmoteni OE., Fehintola FO. Effect of Health Education on Level of Awareness and Knowledge of Nigerian In-School adolescents on Stroke and Its Risk Factors. Journal of Stroke and Cerebrovascular Diseases. 2020;29(5), doi: 10.1016/j.jstrokecerebrovasdis.2020.104757.
28. He FJ., Wu Y., Feng XX., Ma J., Ma Y., Wang H., et al. School based education programme to reduce salt intake in children and their families (School-EduSalt): Cluster randomised controlled trial. BMJ (Online). 2015;350, doi: 10.1136/BMJ.h770.
29. He FJ., Li J., MacGregor GA. Effect of longer term modest salt reduction on blood pressure: Cochrane systematic review and meta-analysis of randomised trials. BMJ (Online). 2013, doi: 10.1136/bmj.f1325.
30. Amran, Stang, and Anwar Mallongi, 2017. Analysis of dengue fever risk using geostatistics model in bone regency. AIP Conference Proceedings 1825, 20002 <https://doi.org/10.1063/1.4978971>
31. Muhith A, Winarti E, Perdana SSI, Haryuni S, Rahayu KIN, Mallongi A. Internal Locus of Control as a Driving Factor of Early Detection Behavior of Servical Cancer by Inspection Visual of Acetic Acid Method. Open Access Maced J Med Sci [Internet]. 2020 Apr. 20 [cited 2022 Nov. 10];8(E):113-6.
32. Mallongi, A.; Stang S.; Astuti, R.D.P.; Rauf, A.U.; Natsir M.F., (2023). Risk assessment of fine particulate matter exposure attributed to the presence of the cement industry. Global J. Environ. Sci.Manage., 9(1): 1-16. DOI: 10.22034/gjesm.2023.01
33. Masriadi, Rahmawati Azis, eha Sumantri, Anwar Mallongi. Effectiveness of non pharmacologi therapy through surveillance approach to blood pressure degradation in primary hypertension patients, Indonesia. Indian Journal of Public Health Research & Development, 2018; 9(2): 249-255