

An Analysis Of Deep Learning In CXR Medical Image Processing

Syed Mohammed Shafi^{1*}, Sathiya Kumar C²

¹Ph. D. [pursuing], School of Computer Science and Engineering, Vellore Institute of Technology, Vellore, Tamil Nadu, India - 632014., Email: syedmohammed.shafi@vit.ac.in

²Ph.D., School of Computer Science and Engineering, Vellore Institute of Technology, Vellore, Tamil Nadu, India - 632014., Email: sathiyakumar.c@vit.ac.in

*Corresponding Author:- Syed Mohammed Shafi
DOI: 10.47750/pnr.2022.13.S05.109

Abstract

When it comes to the process of extracting information from chest X-ray data, Deep Learning models have shown exceptional performance thanks to more powerful processing capabilities and improved training techniques. These models also provide a number of other benefits. As one of the most common imaging techniques, its expanding popularity is reflected in the increasing amount of work that radiologists are required to do. Since of this, computer-aided diagnostic tools would be beneficial in the healthcare business because they would enable medical professionals to prioritize certain tests and more accurately detect certain ailments. To the best of the author's knowledge, there is no publication in the existing body of research that particularly reviews relevant work on anomaly detection and multi-label thoracic pathology categorization. For the purpose of facilitating comparison, the most effective chest X-ray-based deep learning algorithms have been chosen for this study. Recent developments in deep learning technology have led to improvements in the performance of a variety of professions in the field of medical image analysis. Because chest radiographs are the kind of radiological examination that is performed the most often and because they have the most varied range of applications that have been investigated, this modality is considered to be of utmost significance. In recent years, as a consequence of the public release of multiple big chest X-ray datasets, there has been a rise in the level of interest shown by academics. Explanations of every dataset that is available to the public are provided in extensive detail, and descriptions of currently available commercial solutions are also provided.

Within the realms of medical image analysis and computer-aided radiology diagnosis, a contentious issue that is being discussed at length is the classification of X-ray pictures taken of the chest. The primary goal of this project is to improve the efficiency as well as the quality of the work performed by radiologists by designing and putting into action an automated approach for recognizing and categorizing different diseases." This study focuses on chest X-ray image classification approaches that make use of machine learning methods. The purpose of this work is to improve existing surveys, and it does so by using strategies for chest X-ray image classification that are based on machine learning methods." At the start, a basic comprehension of chest radiography and medical image processing is presented, coupled with a short introduction to data mining.

Keywords: Chest X-ray, Medical image analysis, Deep Learning

1. INTRODUCTION

Pneumonia, which claims the lives of around 4 million people annually, is one of the leading causes of mortality in people of all ages, including young children and the elderly. It may be caused by a viral, bacterial, or fungal infection, depending on the causative agent, and it manifests itself as damage to the Alveoli, which are the very small air sacs found in the lungs. In the event that the illness is not recognized and treated in a timely manner, patients who already have preexisting conditions such as asthma, those whose immune systems are suppressed, sick neonates, and elderly patients who are on ventilators may be put in a situation where their lives are in danger. Imaging methods such as computed tomography (CT), magnetic resonance imaging (MRI), and computed tomography (MRI) are used in medical practices for the purpose of diagnosing patients with pneumonia. Because of its accessibility and low overall cost, CXR is the diagnostic method that is used the most often all over the globe to identify cases of pneumonia. Because the images exhibit opacities that are similar to those of other lung abnormalities such as lung cancer and excess fluid, chest radiographs may make it difficult, even for highly skilled radiologists, to identify pneumonia. This is because chest radiographs exhibit opacities that are similar to those of other lung abnormalities. As a consequence of this, traditional CXR-based pneumonia diagnosis takes a long time and is unreliable, which may delay the identification of the ailment as well as the treatment for it. According to the authors, computer-aided detection (CAD) systems are becoming increasingly popular "due to the "increasing demand for early pneumonia detection, the widespread use of CT scans, and the difficulty in interpreting these images," represent a promising approach for automated detection that can assist physicians in overcoming the problems mentioned above and improving detection accuracy in a clinical setting. When leveraging CAD systems, popular methods include image preprocessing, areas of interest (ROI) and related feature extraction, and feature-based disease classification ". As a direct consequence of this, machine learning will rapidly advance [2].

"Chest radiography has been a cornerstone of radiological imaging for decades, and it continues to be the most frequently performed radiological exam in the world, with the United States and other industrialized countries reporting an average

of 238 erect-view chest X-ray pictures per 1000 of population each year," according to one source. "Chest radiography has been a cornerstone of radiological imaging for decades, and it continues to be the most frequently performed radiological exam in the world." It is projected that 129 million photographs taken with the CXR camera were taken. The increased demand for and availability of computed tomography (CT) scans may be attributed to the low radiation dose and cost-effectiveness of CXR images, as well as their acceptable sensitivity to a wide variety of diseases." The chest x-ray (CXR) is often the first imaging test that is conducted, and despite its limitations, it is nevertheless useful for diagnosing and treating a wide range of disorders. The patient's position and orientation in reference to the X-ray source and detector panel determines which of the three types of chest X-rays are taken: posteroanterior, anteroposterior, and lateral. These three types of chest X-rays may be recognized from one another ". The perspectives of the patient that are considered to be the frontal views are the posteroanterior (PA) view and the anteroposterior (AP) view. In contrast, the AP picture is most often acquired from patients who are positioned in a lying-down position, as opposed to patients who are photographed while in a standing position for the PA shot. "The X-ray may be projected from one side of the patient to the other by combining a PA picture with a lateral image. This is often done in a clockwise direction, moving from right to left. The interpretation of chest radiographs might be difficult at times because of the superimposition of anatomical features along the projection path ". As a result of this influence, it may be more challenging to correctly discern between distinct disease patterns, recognize minor or subtle abnormalities, or uncover abnormalities in particular locations [3]. After that, the National Institutes of Health made the chest x-ray accessible to the public (NIH). This dataset was eventually enlarged to encompass six more categories, which resulted in the development of ChestX-ray as well as an increase in the overall number of frontal CXR pictures. Both of these events took place after some time had passed. It is thought that this version, in comparison to the one that came before it, is a more accurate portrayal of the patient distributions as well as the diagnoses. In addition to recognizing the existence of 12 pathology-related classes, chest X-rays may also identify medical support devices and fractures; all of these results are reported in radiology reports that were made accessible with the photos [4].

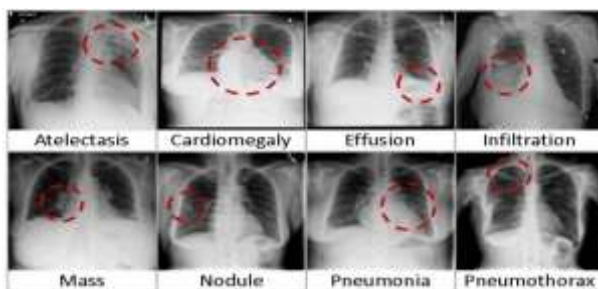


Figure 1: Eight Common Thoracic Diseases Observed In Chestx-Ray.

A chest x-ray, also known as a CXR, is one of the noninvasive medical imaging procedures that is requested the most frequently by medical professionals in order to evaluate the presence of thoracic disorders in the general population. This is primarily because chest x-rays are both inexpensive and noninvasive. However, even for radiologists with a high level of expertise, thoroughly examining CXR images is a time-consuming process that may be difficult to do. The employment of computer-aided diagnostic tools in hospitals is a practical solution for increasing the productivity and efficiency of test interpretation. These tools provide a second pair of eyes to assess the data, which contributes to their usefulness in this context. Deep learning (DL) based methods have been selected over normal machine learning approaches in order to analyze a range of thoracic ailments. This is because there has been an increase in the processing capacity available, as well as an increase in the accessibility of medical datasets. DL has been demonstrated to be very successful for multi-disease identification and categorization assignments utilizing data-driven approaches. This has made it an ideal preliminary diagnostic tool that reduces the load placed on physicians. Before it is possible to arrive at a diagnosis, a computer-aided diagnostic system that is based on CXR images has to complete a series of steps. The abnormality detection process is one of the most important of these procedures since it ranks the most serious abnormal conditions in order of importance. This stage has the potential to be improved even further by the incorporation of an important new duty, namely the identification of illnesses that are present in the examination that is being examined. A multi-label thoracic pathology classification approach is required since there is a potential of many labels showing in the same image or on the same patient in this scenario.

2. Review of Literature

The patient's position and orientation in regard to the X-ray source and detector panel determine which of the three types of chest X-rays may be taken: posteroanterior, anteroposterior, and lateral. These three types of chest X-rays can be identified from one another. The perspectives of the patient that are considered to be the frontal views are the posteroanterior (PA) view and the anteroposterior (AP) view. In the examination room, the patient is often positioned to be laying down when the AP photo is taken, but the PA image is typically taken with the patient standing in an upright position. When taking an X-ray of a patient, the image is often projected from the right side of the patient's body to the left side of the patient's body. There is a possibility that the chest radiograph will be difficult to interpret as a result of the superimposition of anatomical components along the projection path. Because of this consequence, it may become more challenging to recognize subtle or minor abnormalities, detect abnormalities in particular locations, and properly

discriminate between various illness patterns. Because of this, the interpretations of CT scans provided by radiologists might vary greatly from one observer to the next [5].

"Research has been performed in one subfield of medical image analysis known as computer-aided diagnosis (CAD) in an attempt to eliminate this restriction," The primary objective of computer-aided design (CAD) is to provide assistance to radiologists in locating the location of a lesion and estimating the chance that a disease would manifest itself. The use of computer-aided design (CAD) has the potential to improve the efficiency as well as the quality of the work performed by radiologists. This is something that may be done since the results of CAD can be used by radiologists as a kind of "second opinion" to assist them in image analysis. Because of their superior ability to deal with data that contains significant spatial correlations, convolutional neural networks, also known as CNNs, are often utilized in the diagnosis and classification of conditions affecting the cardiothoracic and pulmonary systems. Multiple studies have demonstrated that the performance of humans in a variety of medical-related activities, such as detecting diabetic retinopathy and classifying skin cancer, is on par with, or even superior to, that of artificial networks. These activities include detecting diabetic retinopathy and classifying skin cancer. The authors believe that this is a significant contribution to the field because they are not aware of any other article that contains a comprehensive analysis of recent studies and that solves the thoracic abnormality detection and classification tasks using only deep learning methods. As a result, they believe that this is an important addition to the field. This is the reason why the current work aims to collect and characterize all CXR databases that are available to the public, as well as to assess how these databases have been used to address issues in anomaly detection and pathological categorization in the investigations that are most relevant to the question at hand. It was also stated that the Area Under the Curve (AUC) [6, the most common kind of evaluation statistic, will be used in order to make comparisons between the articles that were selected.

When it comes to chest radiography, the area of medical image analysis is now grappling with three significant research problems that must be taken into consideration. Both the necessity to enhance the display of CXR pictures and the requirement to eliminate normal structures from CXR images so that anomalies may be seen more clearly can be satisfied by generic processing methods, which are described first. Methods of subtraction are used so that common components may be removed from the picture. After that, tactics such as local equalization and sharpening are used to assist with the process of enhancement. In the second phase, several anatomical components, including the rib cage, lungs, and other segments, are formed. Various methods, including rule-based reasoning and pixel classification, have been used during the construction of segmentation. This demonstrates that the technology underpinning CAD systems includes "the methodologies for discovering and extracting anomalies, measuring image variables associated to abnormalities, discriminating between normal and abnormal, and evaluating performance using ROC analysis." [7].

"A Support Vector Machine is used to partition the frontal and lateral views of the CXR pictures into two separate groups (SVM). They were able to extract some helpful information from CXR, such as the body size ratio and image profile, and they used this information to construct a new contour-based form descriptor. CXR was able to provide them with this information. The National Library of Medicine (NLM), which is based in the state of Indiana, contributed around 8300 digital x-ray images as well as 4000 x-ray reports to the investigation. The result showed a high level of accuracy based on a cross-validation test that was conducted 10 times." A research was carried out to investigate the capability of CNNs and deep learning to recognize a variety of conditions based on chest x-ray images. It was hypothesized that the CNN's Deep Convolutional Activation Feature, often known as DeCAF, could be able to extract important descriptors from a big non-medical image collection, in particular Image Net. Because there were no alternative sources of large-scale medical photographs that could be used for training purposes, the decision was taken to make use of Image Net. In their investigation, they also made use of the PiCoDes descriptor, which is a compressed and streamlined high-level representation of low-level characteristics (e.g., GIST). For the purpose of this investigation, 93 frontal chest X-ray photographs were taken from patients with three distinct illnesses. Sheba Medical Centre generously provided the datasets that were used in this work. They recently analysed a larger dataset, which consists of 637 frontal chest X-ray photographs with six different diseases, which they highlighted in their current paper. They looked at this dataset. The research results provided evidence in support of the hypothesis that pre-trained CNNs equipped with DeCAF and PiCodes would be sufficient for widespread medical picture recognition. They discovered that include certain CNN layer characteristics produced a feature set that was both more informative and enhanced performance on the chest pathology classification test, resulting in a "win-win" outcome for all parties involved. Using medical image recognition, a realistic machine learning system is able to learn from a patient's chest x-rays and supporting radiology data (MICR), as well as detect sickness within those images, and define the patient [8].

Deep convolutional neural networks are used in order to locate abnormalities in frontal CXR images (DCNNs). The researchers found that ensemble models performed better than single models when it came to classification accuracy in their study, which solely used DCNN models as the basis for their analysis. The accuracy of the models suffered as a result of their combination with rule-based models and DCNN models. In addition to this, they investigated the factors that influenced the categorization decision. For the purpose of the research, they used the Shenzhen dataset, which included a total of 662 CXR photographs, the JSRT dataset, which comprised a total of 247 CXR pictures, and the Indiana dataset, which comprised a total of 7284 CXR pictures. In situations of geographically spread abnormalities like cardiomegaly and pulmonary edema, the author discovered that the network is often able to detect the abnormalities in a successful manner. Using the DCNN with ensembles technique, it was possible to correctly forecast both cardiomegaly and TB, with respective success rates of 93% and 90% [9].

the need for a detailed analysis of the patient's medical history. As a direct consequence of this, they establish a new CXR database that they refer to as ChestX-ray. This collection contains a total of 108,948 pictures of frontal-view X-ray scans

taken from a total of 32,717 individual patients." Atelectasis is the most prevalent sickness, and each image has a different name for this condition. Cardiomegaly, effusion and infiltration, mass and nodule, pneumonia, and pneumothorax are some of the other concerns that have been seen. They were able to achieve an average accuracy score of 62.89 percent for eight different illnesses by using the DCNN algorithm to analyze chest x-ray images for the purpose of illness prediction. These eight illnesses were atelectasis, cardiomegaly, pleural effusion, infiltration, mass, nodule, pneumonia, and pneumothorax. The prediction of cardiomegaly was shown to be the most accurate diagnosis, whereas the detection of nodules was determined to be the least accurate diagnostic [10].

"An investigation is being conducted to determine how difficult it is to categorize a variety of ailments using chest x-ray images. The increased risk of coming across duplicate data was the major focus of the investigation, and its principal goal was to solve this concern. They devised a technique that makes use of Location Aware "Dense Networks to mix high-resolution image data with spatial information to increase classification accuracy." This enables them to identify illnesses by looking at chest X-ray images. The findings demonstrate that an increase in the availability of geographic data leads to an improvement in the accuracy of the findings. The researchers "undertook a rigorous investigation of numerous multi-label classification algorithms" in addition to comparing their improved ResNet-50 model with more current discoveries. The researchers used a method known as "5-fold resampling" in order to conduct study on three very important aspects. These were the several initialization techniques for the ResNet-50, as well as the varied input size network topologies and non-image characteristics, such as age, gender, and view location. For the testing, they used ChestX-Ray, and they carried out ROC analyses by making use of AUC for each of the fourteen classes or illnesses that were taken into consideration. According to the findings of their investigation, the outcomes were quite different depending on the way in which the dataset was divided up. Its improved ResNet-50 achieved a score that was at the forefront of the pack in four of the fourteen different courses that were evaluated.

3. OVERVIEW OF DEEP LEARNING METHODS

This part provides a specific introduction to deep learning for image processing as well as a review of the research that are mentioned in the article. Both of these elements are included here. According to the findings of a recent investigation into the use of deep learning in the area of medical image processing, "many articles present extensive mathematical definitions and descriptions of fully-connected and convolutional neural networks." [Citation needed] In this study, we simply present a high-level review of these important features, and we direct readers who are interested in doing additional in-depth research to older publications. "Deep learning is a subset of machine learning, which is a word that widely refers to techniques for learning new information," states the author. "Machine learning" is a phrase that extensively refers to methods for learning new information. One may say that the neural network is the algorithm that lies at the heart of all deep learning systems. It conceals several more layers underneath its surface (thus the word "deep"). The overarching framework of a network is referred to as its "architecture," and the formation of such networks may take place in a variety of different ways using a number of different layers. [11].

Convolutional Neural Networks

In the 1980s, the concept of using convolutional layers for image processing was introduced for the first time. Over the course of the next three decades, as technology advanced, the concept was increasingly defined. These convolutional layers are the foundation of almost every single deep learning image processing job, and in practical applications, they are nearly always paired with one another. These neurons are individually applied to a different segment of the layer before them, operating as a sliding window over all regions and detecting the same local pattern everywhere. "Neurons in convolutional layers are only connected to a small fraction of the previous layer's "receptive field." " The procedure in question involves dispersing the learned weights while still maintaining the spatial information [12].

Transfer Learning

Transfer learning refers to the process of researching how knowledge learned in one field (referred to as the "source domain") may be used in another field. It's a way of exchanging data and knowledge (the target domain). "In CXR analysis, pre-training is widely considered to be one of the most successful and popular transfer learning processes. In the pre-training approach, the network architecture is trained on a large dataset for a certain task first, and then it is fine-tuned using the acquired weights as an initialization for the next job. This is done in order to prepare the network for the subsequent task ". In certain cases, depending on the availability of data from the target domain, it may be necessary to retrain all of the layers of the model, whilst in other cases, it may be sufficient to retrain just the last layer, which is the one that is entirely connected. This approach allows neural networks to be trained for new tasks with a less number of datasets than they would normally need since it retrieves crucial low-level characteristics from the data that was originally collected for the domain. According to the results of this research, pre-training on the ImageNet dataset, which is used for classifying natural pictures, is effective for the analysis of chest radiography. This kind of transfer learning is prevalent in the research that was looked at for this work. "Versions of deep learning frameworks that have been trained on ImageNet are among the many architectures that have been made available for public download as part of well-known deep learning frameworks. In addition to data extraction techniques that have been around for longer, such as support vector machines or random forests, the pre-trained architectures may also be used in their own right as feature extractors".

Image-level Prediction Networks

In the context of this investigation, the term "image-level prediction" refers to the difficulties that must be overcome in order to anticipate a category label (classification) or continuous value using the whole CXR picture (regression). "Unlike other systems, which anticipate little patches or segmented sections of a picture, these algorithms give predictions for the whole photograph." According to the results of this research, classes and regression tasks are often grouped together since they frequently make use of the same architecture. As was indicated earlier, the final output layer serves as an important point of demarcation between the two types of jobs. AlexNet, which is being used today, is notable for being one of the first examples of a deep convolutional network that could reliably estimate picture levels. One of the first effective deep convolutional architectures for image-level prediction, it consisted of five layers of convolutional processing, followed by three layers that were totally coupled to one another. As a direct consequence of AlexNet's dominating performance in the ILSVRC (ImageNet) competition in 2012, substantial forward progress has been made in the relevant body of scholarly work. "Since then, there has been a substantial development in the process of designing deep convolutional neural networks. The VGG family of models include three fully-connected layers immediately after each convolutional layer, giving a total of between 8 and 19 layers ". "When the Inception architecture was unveiled to the public for the first time in 2015, it made use of stacked blocks that were referred to as Inception modules and featured various sizes of convolutional filters. In 2016, the ResNet family of models began to gain attention and began to perform better than its predecessors had previously done. These models result in the production of skip connections, which, in the majority of instances, improve the performance of the model as a whole, as well as residual blocks, which are formed of numerous convolutional processes ". As a direct result of ResNet's popularity, skip connections have found widespread use across a variety of topologies [13].

Image Segmentation

Segmentation, which is essential but also difficult, is one of the most difficult aspects of image processing. It is also one of the most important. It has quickly risen to the very top of the list of popular destinations for image interpretation. This restricts the applicability of other technologies and the widespread usage of 3D reconstruction in particular. Picture segmentation is the process of breaking a single image into many fragments that each have properties that are comparable to one another. It is frequently referred to as the process of eliminating items from a picture's backdrop, which is another name for it. Currently, there is a trend toward improving both the accuracy and speed of image segmentation algorithms. Our team is working on developing a generic image segmentation algorithm that can be used to many different kinds of pictures by integrating a number of fresh ideas with the most recent and cutting-edge technological advances. As the field of medical treatment continues to advance, numerous kinds of cutting-edge medical imaging equipment are increasingly being put to use. X-rays, ultrasound, computed tomography (CT), magnetic resonance imaging (MRI), positron-emission tomography (PET), and magnetic resonance imaging (MRI) are some examples of the types of medical imaging methods that are often used in medical clinics (UI). The collection also includes a wide range of RGB pictures that are used regularly in the medical field. These pictures include fundus retinal images as well as photographs that were obtained using a microscope. Medical photographs often include a wealth of information that may be of great use to practitioners. When evaluating a patient's health, clinicians often rely on CT scans and other types of medical imaging. In recent years, these images have become the primary resource for clinical diagnosis among medical professionals. As a direct consequence of this development, research in the field of medical image processing has risen to the top of the to-do list for those who specialize in computer vision. Deep learning (DL) image segmentation algorithms have demonstrated great advances in the area of photo segmentation in recent years. This may be attributed to the rapid development of artificial intelligence, especially deep learning (DL) [14].

Deep learning has a lot of advantages over more traditional methods of machine learning and computer vision, notably in terms of the accuracy of segmentation and the processing speed. Deep learning might be used to segment medical photos, which would allow doctors to check the size of sick tumors, keep track of the effectiveness of medications before and after they are administered, and spend less time with patients. This is a possibility. We searched Google Scholar and ArXiv for the most current research on "medical image processing" and "deep learning" in order to offer a more in-depth review of the various approaches. In addition, we get helpful knowledge from well-known conferences on medical image processing such as MICCAI (Medical Image Computing and Computer Assisted Intervention), ISBI (International Symposium on Biomedical Imaging), and IPMI (International Symposium on Medical Imaging) (Information Processing in Medical Imaging). We selected the articles that, in some manner, made use of deep learning, which turned out to be almost all of them. We assure you that all of the article's findings will be verified by our team of industry professionals. In contrast to previous studies, this one investigates the benefits and drawbacks of the most recent advancements in deep learning for the purpose of medical image segmentation. It compares and evaluates relevant methods, as well as addresses the challenges that will need to be overcome in order to successfully use effective deep learning algorithms for medical picture segmentation tasks in future research [15].

4. CHEST X-RAY DATASETS

Even while it has been shown that data-driven strategies improve the effectiveness of computer-aided diagnostic systems, the fact that these strategies have a voracious appetite for data has also been recognised as a barrier to further development. In point of fact, considerable progress has only been made feasible because to the recent release of larger public CXR datasets. This has allowed for major advances. In light of this, it is reasonable to hope that these systems will soon have a genuinely large-scale and high-precision application in a real-world clinical setting. This is the case despite the fact that

collecting and annotating CXR information may be challenging. Because of the large number of CXR images that are required for DL methods, it may be challenging to annotate these photographs with the necessary degree of precision. When it comes to establishing the criteria that must be adhered to when annotating data or developing the labels themselves, there are several approaches that may be taken. It is essential to keep this in mind. Despite the obstacles, a number of CXR datasets have been made available. These datasets may be separated into two categories: those that concentrate on a specific thoracic condition, and those that annotate a broad variety of illnesses. The first group will only get a cursory examination in this investigation, since the primary focus will be placed on datasets that include an extensive range of illnesses [16].

The ChestX-ray dataset is without a doubt the standard setter for the industry when it comes to CXR-based computer-assisted diagnostic applications, as will be shown in the following sections. As a consequence of these circumstances, there are a number of critical questions that need to be answered about the scope of its limitations. The ChestX-ray labels were first developed by the use of natural language processing techniques applied to radiology reports. However, there was no expert validation performed to guarantee that the final annotations were accurate representations of the pictures' contents. Instead, the tagged photographs were compared to the dataset that is available to the public via Open-I at Indiana University (F1 score of 0.90). As a consequence of this, a number of people have expressed concerns over the quality of the annotations, specifically how well the labels depict the disease (or pathologies) that are shown in each image. Due to the lack of human and expert-based verification, it is not guaranteed that the positive predictive values of the text-mined ground-truth will match the positive predictive values derived using visual queues. This is because of the absence of human verification. In addition to the fact that they do not include any information on the predicted range of anomalies beyond those 14 diseases, the labels that have already been developed are not quite wide enough (for example, pacemakers and invasive lines). In addition, the "no discovery" hypothesis just assures that specific 14 illnesses are not seen; it does not guarantee that the observer is healthy overall. Other issues might be addressed as well, such as the variations in class sizes across illnesses or the importance of the CXR photos in connection to some of the remarks that were proposed.

Year	Dataset	Patients	Images	Format	CXR	Non-
					view	normal labels
2000	PLCO	56 071	185 421	TIFF	frontal	12
2015	Open-I Indiana	3996	8 121	DICOM	frontal	10
2017	ChestX-ray8	32 717	108 948	DICOM	frontal	8
2017	ChestX-ray14	30 805	112 120	PNG	frontal	14
2019	CheXpert	65 240	224 316	PNG	frontal and lateral	13
2019	MIMIC-CXR	65 379	377 110	DICOM	frontal	13
	MIMIC-CXR-JPG			JPG	and lateral	
2020	PadChest	67 625	160 868	DICOM	frontal and lateral	193

Table 1: Description Of Multiple Pathology CXR Datasets

5. COMMERCIAL PRODUCTS

CXR was one of the first modalities for which a commercial solution for automated analysis became available in 2008. This came after years of research on computer-aided analysis of CXR pictures. Even with the help of a reader's assistant, transitioning from research to clinical practice is a time-consuming procedure. This is despite the fact that deep learning has made it feasible for the field to make significant strides forward." The lack of adoption of artificial intelligence (AI) products in the radiological process may be attributable to a variety of legal and ethical challenges; despite this, efforts are still being made to better understand and manage the concerns that need to be handled." "In this part, we will investigate the CXR analysis tools that are currently available for purchase in the business sector. Research was done on an up-to-date list of commercial products used for medical image processing in order to determine which objects should be photographed for chest X-rays ". "One of the products had to be omitted due to the fact that it was not a CXR diagnostic tool but rather a texture analysis tool that could be used in a number of other imaging modalities. Six of the commercial items include results for more than five (and sometimes up to thirty) separate labels, encompassing a wide range of anomalies. These findings may be found on the packaging for the goods ". The jobs of detecting pulmonary effusion, nodules, and tuberculosis are the ones that are carried out the most often (8 items), followed by the detection of pneumothorax (8 goods). "In contrast to the current state of knowledge, research on image-level prediction algorithms, which is often represented by heatmaps or the contouring of anomalies, is now underway. In order to generate bone suppression photos, two further items, one for visualizing interval change and the other for recognizing and reporting healthy pictures, are now being developed ". Products provide assistance to the workflow of radiology professionals in a number of different ways. Five components are supposed to detect critical conditions, and their purpose is to help prioritize the work list and cut down on the amount of time it takes to get a diagnosis. Depending on the circumstances, a number of different potential solutions provide draught reports either just for the usual (healthy) cases or for all occurrences. [17] Increasing the radiologist's productivity is the objective of both the process of process prioritizing and the development of draught reports.

Deep learning has been more popular in recent years as the method of choice for carrying out tasks related to image processing, and it has had a considerable influence on the field of medical imaging. The CXR research community has

profited in recent years from the production of database labels as a result of the automated parsing of radiology reports. This has permitted the publishing of numerous large labelled datasets. This pattern was established with the publishing of 112,000 photographs from the clinical center of the National Institutes of Health in the year 2017. More than 755,000 photos were contributed to the three labelled databases during the first three months of 2019. These databases include MIMIC-CXR, PadChest, and PadChest. In this artificial intelligence (AI) research, we illustrate how the release of these data sets has an effect on the number of articles about deep learning.

The journal *Medical Imaging* has already conducted a review on the topic of deep learning in relation to medical image processing and computer-aided diagnosis for CXR. On the other hand, recent research on deep learning in chest radiography has been critically lacking in terms of the literature and methodologies examined, the description of publicly accessible datasets, and the evaluation of future possibilities and advancements in the field. This is the case despite the fact that the research has been conducted relatively recently. A comprehensive list of datasets that are available to the public is also provided, along with information regarding the number of images and labels contained in each dataset, the types of images and labels included, and some commentary and warnings regarding the various characteristics of the datasets. All of these aspects of the topic, including its trends, gaps, notable contributions to the field, and proposed potential themes for future research, are investigated. Other topics, such as commercially accessible methods for evaluating chest radiographs and the most effective technique to apply research results in clinical settings, are also discussed in [18] the article.

Recently, there has been a rise in interest in the use of machine learning to the process of automatically interpreting and diagnosing medical pictures, most notably CT scans (contrast imaging). The capabilities of CAD software are being improved with the assistance of machine learning. As was said before, deep learning has been studied and determined to be the most successful machine learning model for medical image interpretation to far. This was discovered after the research that was mentioned earlier. The use of machine learning (ML), and more specifically deep learning, in the processing of CXR images, such as the classification and segmentation of pictures, has been enhanced thanks to a range of research programs. In order to advance the development of CAD technology that has enhanced analytical capabilities, an investigation or research project is necessary to gather these methodologies and provide a comparative analysis [19].

6. ABNORMALITY DETECTION

Even while the identification of abnormalities is less important than the classification of pathologies, it has the potential to considerably affect the development of a triage system for the CXR images that are now being considered. It is possible to specify the automatic triage criteria for patient photographs in a number of different ways, including the labels that should be taken into consideration. Despite the fact that some academics argue for a more complicated three-label system, the two annotations that are utilized the most are normal and abnormal. Moreover, normal and abnormal are the only two annotations that are employed (normal, abnormal, and emergent). Additionally, it is possible to detect a specific ailment, such as tuberculosis, pneumonia, or cardiomegaly; in this scenario, the aberrant label indicates the presence of the specific illness that is being investigated. Even though in this part we will just be looking at broad examples of normal and abnormal annotations, the next portion is going to be a binary classification exercise. There are many different studies that analyze the performance of well-known architectures, and the most prevalent off-the-shelf CNN-based algorithms that are utilized in the medical field today are often used to detect anomalies in CXR. In the first study that the authors have published, they conduct an analysis of the ChestX-ray14 dataset in addition to the AlexNet, VGG, GoogLeNet, ResNet, and DenseNet datasets. Following their training on the ImageNet weights, all of the CNNs performed well, with the DenseNet technique somewhat outdoing the others in terms of effectiveness. As a direct consequence of this, they were in a position to get the standard Open-I Indiana CXR photos in addition to the 14 abnormality-positive pathological events that were obtained from the latter. The number of convolutional layers has been cut down significantly when contrasted with VGG, ResNet, and DenseNet. The authors argue that transfer learning shouldn't be applied in this context since the similarities and differences between medical pictures and the images in ImageNet are so great. This goes opposed to studies that were made before that showed the opposite. They suggest a hierarchical shorter CNN structure with an improved loss function (sin-loss) to deal with the data in indistinguishable features and incorrectly classified images. They claim that ChestX-ray is big enough to train a smaller CNN from scratch without being limited by time or memory constraints. This would allow them to deal with the data in indistinguishable features and incorrectly classified images. Every one of these approaches treats the issue at hand as a binary classification problem, even though there are other approaches to anomaly detection that may be employed instead. One of them is of the opinion that it is a problem of the one-class kind, in which the task at hand is to choose a single data category from among all of the observations. Learning from a training set that solely comprises items belonging to the category in question is the primary method used here. It is recommended that this study be expanded upon and that an end-to-end architecture be developed that integrates chest x-rays with generative adversarial one-class learning in order to detect anomalies in the chest. This would be done in order to diagnose chest conditions. When processing a normal CXR, the network makes use of three key processing modules: the U-Net autoencoder, the CNN discriminator, and the encoder. In addition, methods that are based on one-class autoencoders are utilized for the acquisition of normal samples and the reconstruction of normal versions of images while simultaneously accounting for pixel-wise uncertainty. When uncertainty-weight is taken into account, this approach may be used to detect aberrant findings in chest x-rays.

The authors believe that the one-class assumption should be loosened and that the implicit modeling of more complicated data distribution that autoencoders provide is helpful for identifying medical abnormalities. Both of these points are supported by evidence. The authors start the hyperparameter search using a limited number of aberrant images in order

to provide the model with a more adaptable concept of what is considered normal. This is done rather than using a large number of abnormal photographs. As a consequence of this, the deep perceptual autoencoder may find patterns that are shared by normal observations and then precisely restore those patterns by utilizing the perceptual loss function to determine the degree of pattern dissimilarity, which is then applied to the normal observations. In other words, the result is that the deep perceptual autoencoder discovers patterns that are shared by normal observations. In order to accomplish this goal, the difference in the normalized attributes of the reconstructed image and the original picture is reduced to a minimum.

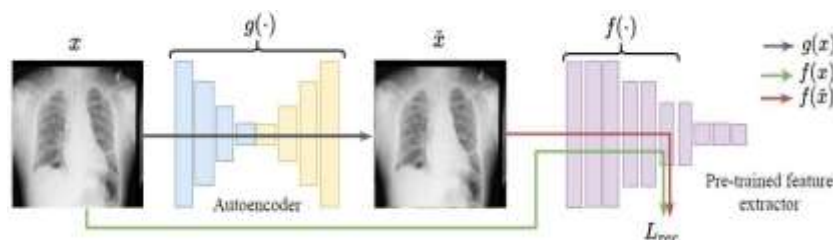


Figure 3: The Proposed Deep Perceptual Autoencoder For Image Anomaly Detection

7. CONCLUSIONS

The goal of computer-aided diagnosis, or CAD, in the field of medicine is to offer medical practitioners with a second point of view while simultaneously reducing the amount of work they have to do and encouraging faster and more accurate diagnosis. They are particularly important for interpreting CXR photos since these pictures provide complex information on a variety of diseases that impact a variety of organs, and CXR pictures contain this information. As a direct result of recent advancements in both the methods of deep learning and the processing power available, the effectiveness of CXR-based computer-aided diagnostic algorithms has seen a substantial performance boost. This performance has also benefited from the recent availability of larger annotated public CXR datasets, which has helped improve the accuracy of the results. "Along with a detailed examination of the present state-of-the-art in two distinct tasks— anomaly detection and thoracic pathology categorization—the most important publically accessible annotated CXR datasets are discussed here. These datasets may be accessed online. In this article, the multiple datasets, literature, and commercial tools that were employed in this study and all of which are relevant to deep learning in CXR analysis are provided ". This study categorizes the available data as well as the relevant literature in order to make it simpler for researchers who are unfamiliar with the subject matter to get the information that they want. This section examines how future research may be conducted to create outcomes that are of a better quality and more useful to therapeutic applications.

CXRs, CT scans, the findings of laboratory tests, or any other relevant data may be used to obtain these labels. Ideally, there should be many readers available. When using data that is publically accessible, it is very necessary to take into consideration the image quality as well as the possibility of label overlap. " Despite the fact that label dependencies are only briefly covered in a few papers, they are an issue that is often overlooked, which results in the loss of significant diagnostic data. " " The availability of publicly accessible datasets has led to a rise in interest in CXR analysis, which is a good development in the field; nevertheless, the emergence of several articles from academics who lack expertise of deep learning or CXR analysis is a worrying trend."

REFERENCE:

1. Lee, H., Mansouri, M., Tajmir, S., Lev, M.H., Do, S., 2018. A Deep-Learning System for Fully-Automated Peripherally Inserted Central Catheter (PICC) Tip Detection. *Journal of Digital Imaging* 31, 393–402. doi:10.1007/s10278-017-0025-z.
2. Balachandar, N., Chang, K., Kalpathy-Cramer, J., Rubin, D.L., 2020. Accounting for data variability in multi-institutional distributed deep learning for medical imaging. *Journal of the American Medical Informatics Association* 27, 700–708. doi:10.1093/jamia/ocaa017.
3. Baltruschat, I., Steinmeister, L., Nickisch, H., Saalbach, A., Grass, M., Adam, G., Knopp, T., Ittrich, H., 2020. Smart chest X-ray worklist prioritization using artificial intelligence: a clinical workflow simulation. *Eur. Radiol.* doi:10.1007/s00330-020-07480-7.
4. Baltruschat, I.M., Steinmeister, L., Ittrich, H., Adam, G., Nickisch, H., Saalbach, A., von Berg, J., Grass, M., Knopp, T., 2019b. When Does Bone Suppression And Lung Field Segmentation Improve Chest X-Ray Disease Classification?, in: 2019 IEEE 16th International Symposium on Biomedical Imaging (ISBI 2019), IEEE. pp. 1362–1366. doi:10.1109/ISBI.2019.8759510.
5. Bar, Y., Diamant, I., Wolf, L., Greenspan, H., 2015a. Deep learning with non-medical training used for chest pathology identification, in: *Medical Imaging 2015: Computer-Aided Diagnosis*, SPIE. p. 94140V. doi:10.1117/12.2083124.
6. Huang, G., Liu, Z., v. d. Maaten, L., Weinberger, K.Q., 2017. Densely connected convolutional networks, in: *IEEE Conference on Computer Vision and Pattern Recognition*, pp. 2261–2269. doi:10.1109/CVPR.2017.243.
7. Huang, X., Liu, M.Y., Belongie, S., Kautz, J., 2018. Multimodal unsupervised image-to-image translation, in: *Computer Vision – ECCV 2018*. Springer, pp. 179–196. doi:10.1007/978-3-030-01219-9_11.
8. Bar, Y., Diamant, I., Wolf, L., Lieberman, S., Konen, E., Greenspan, H., 2015b. Chest pathology detection using deep learning with non-medical training, in: 2015 IEEE 12th International Symposium on Biomedical Imaging (ISBI), IEEE. pp. 294–297. doi:10.1109/ISBI.2015.7163871. iSSN: 1945-8452.
9. Bayat, A., Sekuboyina, A., Paetzold, J.C., Payer, C., Stern, D., Urschler, M., Kirschke, J.S., Menze, B.H., 2020. Inferring the 3D Standing Spine Posture from 2D Radiographs, in: *Medical Image Computing and Computer Assisted Intervention MICCAI 2020*. Springer. volume 12266, pp. 775–784. doi:10.1007/978-3-030-59725-2_75.
10. Homayounieh, F., Digumarthy, S.R., Febbo, J.A., Garrana, S., Nitiwarangkul, C., Singh, R., Khera, R.D., Gilman, M., Kalra, M.K., 2020. Comparison of Baseline, Bone-Subtracted, and Enhanced Chest Radiographs for Detection of Pneumothorax. *Canadian Association of Radiologists Journal = Journal l'Association Canadienne Des Radiologistes*, 846537120908852doi:10.1177/0846537120908852.
11. Ayaz, M., Shaikat, F., Raja, G., 2021. Ensemble learning based automatic detection of tuberculosis in chest X-ray images using hybrid feature descriptors. *Physical and Engineering Sciences in Medicine* doi:10.1007/s13246-020-00966-0.
12. Balabanova, Y., Coker, R., Fedorin, I., Zakharova, S., Plavinskij, S., Krukov, N., Atun, R., Drobniowski, F., 2005. Variability in interpretation of

- chest radiographs among russian clinicians and implications for screening programmes: observational study. *BMJ* 331, 379–382. doi:10.1136/bmj.331.7513.379.
13. Hirata, Y., Kusunose, K., Tsuji, T., Fujimori, K., Kotoku, J., Sata, M., 2021. Deep Learning for Detection of Elevated Pulmonary Artery Wedge Pressure using Standard Chest X-Ray. *Can. J. Cardiol.* , S0828282X21001094doi:10.1016/j.cjca.2021.02.007.
 14. Hu, Q., Drukker, K., Giger, M.L., 2021. Role of standard and soft tissue chest radiography images in COVID-19 diagnosis using deep learning, in: *Medical Imaging 2021: Computer-Aided Diagnosis*, International Society for Optics and Photonics. p. 1159704. doi:10.1117/12.2581977.
 15. Baltruschat, I.M., Nickisch, H., Grass, M., Knopp, T., Saalbach, A., 2019a. Comparison of Deep Learning Approaches for Multi-Label Chest X-Ray Classification. *Scientific Reports* 9, 6381. doi:10.1038/s41598-019-42294-8.
 16. Heusel, M., Ramsauer, H., Unterthiner, T., Nessler, B., Hochreiter, S., 2017. Gans trained by a two time-scale update rule converge to a local nash equilibrium, in: *Proceedings of the 31st International Conference on Neural Information Processing Systems*, p. 66296640.
 17. Holste, G., Sullivan, R.P., Bindschadler, M., Nagy, N., Alessio, A., 2020. Multi-class semantic segmentation of pediatric chest radiographs, in: *Medical Imaging 2020: Image Processing*, SPIE. p. 49. doi:10.1117/12.2544426.
 18. Khakzar, A., Albarqouni, S., Navab, N., 2019. Learning Interpretable Features via Adversarially Robust Optimization, in: *Medical Image Computing and Computer Assisted Intervention MICCAI 2019*. Springer. volume 11769, pp. 793–800. doi:10.1007/978-3-030-32226-7_88.
 19. Li, X., Shen, L., Xie, X., Huang, S., Xie, Z., Hong, X., Yu, J., 2020c. Multi-resolution convolutional networks for chest X-ray radiograph based lung nodule detection. *Artificial Intelligence in Medicine* 103, 101744. doi:10.1016/j.artmed.2019.101744